

Wheel Balancing Supplies

Passenger Car Wheel Weights | Truck Wheel Weights
Adhesive Wheel Weights | Wheel Weight Kits | Wheel Weight Tools
Tire Balancing Compounds | Commercial Tire Application Chart





BALANCE



CLEAN



CENTER

Counteract offers a large array of products designed to maximize safety and efficiency. With products proven to save fuel, extend tire life, increase safety and reduce labor, Counteract has what your fleet, or shop needs.

Counteract Balancing Beads are the only balancing product proven to improve fuel economy in two separate SAE J1321/TMC RP-1102 Type II Fuel Consumption Tests.



Why Balance?

Balancing is an important part of your tire service. Whether you are getting new tires, or having your tires rotated, you should get a rebalance each time your wheel comes off of your vehicle. The main reasons for balancing are **comfort** and **tire wear**.



COMFORT

Vehicles are being made lighter and lighter. The heavier cars of yesterday actually helped smooth out the ride by dampening many vibrations before the driver could feel them. The softer suspensions also had the same effect. Another factor is tire technology. Generally, more responsive tires with lower profiles (which send more road feedback to the driver) are being used in today's market. As a result, the slightest imbalance can be felt in most vehicles. For those of you who have larger tires and wheels, balancing is even more critical.

TIRE WEAR

Over the miles you drive, turning, hitting bumps and holes, and driving down uneven road surfaces have led to uneven tread wear on your tires. Perhaps a pothole has knocked-out your vehicle's alignment which creates uneven tire wear. Besides rotating the tires and getting an alignment to set things right, you should also rebalance the tires. Even if you can't feel vibrations, they are present. The uneven tread wear has created an imbalance that generates excessive heat and wear on your tires. Considering the hundreds of dollars you spent on your tires, a rebalance will extend the life of your tires.



WHEEL WEIGHTS: AN OVERVIEW

Wheel weights have historically been made of lead. Over the last decade, there has been pressure put on the tire industry to use wheel weights made from materials other than lead. Two materials with very different characteristics have become the most popular alternatives to lead; steel and zinc.

- **LEAD** has historically been used to manufacture wheel weights because it has distinct characteristics. Lead is very dense, soft, and relatively inexpensive. It is also simple and inexpensive to manufacture using a mold because of its low melting point, and viscosity while in a molten state. Concerns over the dangers of lead have caused some states to ban the use of lead wheel weights. The EPA has already accepted a petition to ban the use of lead wheel weights in the United States, but they have yet to announce a time table or their actual rules.
- **LEAD-FREE** weights are more rigid and less dense than the lead weights we are used to. This results in the necessity more than ever to use the proper application at all times rather than only one or two styles. Please ask your representative for a rim gauge or application chart.
- **STEEL** has become the replacement material of choice for almost all of the OEM's and national tire retailers. Steel has proven itself to be non-toxic, 100% recyclable, and the most prevalent material in the automotive industry.
- **ZINC** has also become a viable replacement to lead wheel weights. A zinc wheel weight is manufactured in a similar process to lead weights. Although a zinc weight has an appearance similar to that of lead, it is important to use the entire range of series for successful balancing.

There are also new emerging technologies such as PlaSteel which combine the benefits of both lead-free alternatives to provide a more user friendly alternative to lead.

Passenger Car Wheel Weights

Ascot Wheel Protector™ Coated Wheel Weights for alloy wheels have a special dry polymer coating that prevents the wheel from being stained by the weight. Designed to meet or exceed all OEM specifications to protect the finish from lead staining for the life of the vehicle. Coated weights have been original equipment on new cars since 1985. Use as a replacement on these vehicles. To avoid damage to the coating, a soft headed hammer should be used to install weights.

“MCS” SERIES - COATED WHEEL WEIGHTS

- “MC” is an economical alternative to OEM quality coated weights
- Coated weights should be used on all vehicles having alloy wheels



488-19100

APPLICATIONS - MC/MCS SERIES

FORD: All from 1985; **CHRYSLER:** All from 1990 to 1997; some models changed to LHS in 1998; **GM:** Increasingly used starting in 1988; as of 2000 only C5 Corvette remains AWS

NOTE: MCS = MCN = ALCMC

ASCOT NO.	MFG. NO.	WEIGHT
“MCS” COATED		
488-19025	MCS025	0.25 Oz.
488-19050	MCS050	0.50 Oz.
488-19075	MCS075	0.75 Oz.
488-19100	MCS100	1.00 Oz.
488-19125	MCS125	1.25 Oz.
488-19150	MCS150	1.50 Oz.
488-19175	MCS175	1.75 Oz.
488-19200	MCS200	2.00 Oz.
488-19225	MCS225	2.25 Oz.
488-19250	MCS250	2.50 Oz.
488-19275	MCS275	2.75 Oz.
488-19300	MCS300	3.00 Oz.
488-19325	MCS325	3.25 Oz.
488-19350	MCS350	3.50 Oz.
488-19375	MCS375	3.75 Oz.
488-19400	MCS400	4.00 Oz.
“MC” UNCOATED		
487-18025	MC25	0.25 Oz.
487-18050	MC50	0.50 Oz.
487-18075	MC75	0.75 Oz.
487-18100	MC100	1.00 Oz.
487-18125	MC125	1.25 Oz.
487-18150	MC150	1.50 Oz.
487-18175	MC175	1.75 Oz.
487-18200	MC200	2.00 Oz.
487-18225	MC225	2.25 Oz.
487-18250	MC250	2.50 Oz.
487-18275	MC275	2.75 Oz.
487-18300	MC300	3.00 Oz.

QUANTITY: “MCS” Coated: 25 per box;
“MC” Uncoated: 50 per box

“AWS” SERIES - COATED WHEEL WEIGHTS

- “AW” is an economical alternative to OEM quality coated weights
- Coated weights should be used on all vehicles having alloy wheels



488-17100

APPLICATIONS - AWS/AW SERIES

FORD: All up to 1984; **CHRYSLER:** All up to 1989; **GM:** All up to 1987; decreasingly used from 1988-2000

NOTE: AWS = AWN = ALC

ASCOT NO.	MFG. NO.	WEIGHT
“AWS” COATED		
488-17025	AWS25	0.25 Oz.
488-17050	AWS50	0.50 Oz.
488-17075	AWS75	0.75 Oz.
488-17100	AWS100	1.00 Oz.
488-17125	AWS125	1.25 Oz.
488-17150	AWS150	1.50 Oz.
488-17175	AWS175	1.75 Oz.
488-17200	AWS200	2.00 Oz.
488-17225	AWS225	2.25 Oz.
488-17250	AWS250	2.50 Oz.
488-17275	AWS275	2.75 Oz.
488-17300	AWS300	3.00 Oz.
“AW” UNCOATED		
487-16025	AW25	0.25 Oz.
487-16050	AW50	0.50 Oz.
487-16075	AW75	0.75 Oz.
487-16100	AW100	1.00 Oz.
487-16125	AW125	1.25 Oz.
487-16150	AW150	1.50 Oz.
487-16175	AW175	1.75 Oz.
487-16200	AW200	2.00 Oz.
487-16225	AW225	2.25 Oz.
487-16250	AW250	2.50 Oz.
487-16275	AW275	2.75 Oz.
487-16300	AW300	3.00 Oz.

QUANTITY: “AWS” Coated: 25 per box;
“AW” Uncoated: 50 per box



“FNS” SERIES - COATED WHEEL WEIGHTS

- Designed for the thicker flange alloy wheels now being used on many Japanese vehicles



488-23030

APPLICATIONS - FNS SERIES

TOYOTA: All since 1990; **LEXUS:** All since 1990; **HONDA:** All since 1989; **ACURA:** All since 1990; **NISSAN:** All since 1990; **INFINITI:** All since 1990; **ISUZU:** All since 1997; **MAZDA:** All since 1990; **DAEWOO:** All since 1999

NOTE: FNS = FN = ALCFN

ASCOT NO.	MFG. NO.	WEIGHT
“FNS” COATED		
488-23005	FNS05	5 Grams
488-23010	FNS10	10 Grams
488-23015	FNS15	15 Grams
488-23020	FNS20	20 Grams
488-23025	FNS25	25 Grams
488-23030	FNS30	30 Grams
488-23035	FNS35	35 Grams
488-23040	FNS40	40 Grams
488-23045	FNS45	45 Grams
488-23050	FNS50	50 Grams
488-23055	FNS55	55 Grams
488-23060	FNS60	60 Grams
488-23065	FNS65	65 Grams
488-23070	FNS70	70 Grams
488-23075	FNS75	75 Grams
488-23080	FNS80	80 Grams

QUANTITY: 25 per box

WHEEL BALANCING // PASSENGER CAR WHEEL WEIGHTS



➔ Coated Alloy Wheel Weights

“LHS” SERIES - COATED WHEEL WEIGHTS FOR DODGE/CHRYSLER

▪ **Weights are coated and specially contoured with unique clip design** ▪ For use with aluminum wheels



488-24100

APPLICATIONS - ENS SERIES

AUDI: All from 1997; **VW:** All from 1997; used on many aftermarket alloy wheels with thin rim flanges

NOTE: LHS = LH = ALCLH

ASCOT NO.	MFG. NO.	WEIGHT
“LHS” COATED		
488-24025	LHS025	.25 Oz.
488-24050	LHS050	.50 Oz.
488-24075	LHS075	.75 Oz.
488-24100	LHS100	1.00 Oz.
488-24125	LHS125	1.25 Oz.
488-24150	LHS150	1.50 Oz.
488-24175	LHS175	1.75 Oz.
488-24200	LHS200	2.00 Oz.
488-24225	LHS225	2.25 Oz.
488-24250	LHS250	2.50 Oz.
488-24275	LHS275	2.75 Oz.
488-24300	LHS300	3.00 Oz.

QUANTITY: 25 per box

“ENS” SERIES - COATED WHEEL WEIGHTS

▪ **Designed for VW & Audi alloy wheels 1997 and up**
 ▪ For vehicles manufactured prior to the 1989 model year



488-22030

APPLICATIONS - ENS SERIES

AUDI: All from 1997; **VW:** All from 1997; used on many aftermarket alloy wheels with thin rim flanges

NOTE: ENS = EN = ALCEN

ASCOT NO.	MFG. NO.	WEIGHT
“ENS” COATED		
488-22010	ENS10	10 Grams
488-22015	ENS15	15 Grams
488-22020	ENS20	20 Grams
488-22025	ENS25	25 Grams
488-22030	ENS30	30 Grams
488-22035	ENS35	35 Grams
488-22040	ENS40	40 Grams
488-22045	ENS45	45 Grams
488-22050	ENS50	50 Grams
488-22055	ENS55	55 Grams
488-22060	ENS60	60 Grams

QUANTITY: 25 per box

“IAWS” SERIES - COATED WHEEL WEIGHTS

▪ **Used on many import car alloy wheels** ▪ Replaces the two piece alloy wheel weights commonly found on vehicles manufactured in Europe



488-20030

APPLICATIONS - IAWS SERIES

AUDI: Up To 1996; **VW:** Up To 1996; **BMW, CATERA, GEO HYUNDAI, JAGUAR, KIA, MITSUBISHI, SUBARU, SUZUKI, VOLVO**

NOTE: IAWS = IAW = ALCIW

ASCOT NO.	MFG. NO.	WEIGHT
“IAWS” COATED		
488-20005	IAWS5	5 Grams
488-20010	IAWS10	10 Grams
488-20015	IAWS15	15 Grams
488-20020	IAWS20	20 Grams
488-20025	IAWS25	25 Grams
488-20030	IAWS30	30 Grams
488-20035	IAWS35	35 Grams
488-20040	IAWS40	40 Grams
488-20045	IAWS45	45 Grams
488-20050	IAWS50	50 Grams
488-20055	IAWS55	55 Grams
488-20060	IAWS60	60 Grams

ASCOT NO.	MFG. NO.	WEIGHT
“IAWS” UNCOATED		
487-21005	IAWU005	5 Grams
487-21010	IAWU010	10 Grams
487-21015	IAWU015	15 Grams
487-21020	IAWU020	20 Grams
487-21025	IAWU025	25 Grams
487-21030	IAWU030	30 Grams
487-21035	IAWU035	35 Grams
487-21040	IAWU040	40 Grams
487-21045	IAWU045	45 Grams
487-21050	IAWU050	50 Grams
487-21055	IAWU055	55 Grams
487-21060	IAWU060	60 Grams

QUANTITY: 25 per box

WHEEL WEIGHTS FOR PASSENGER CAR STEEL WHEELS

▪ **“P” Series:** For use on all passenger car rims with 13”-15” steel wheels ▪ “P” series replaces the two piece (steel wheel) design commonly found on vehicles manufactured in Europe ▪ Designed with “dovetail” clip to insure double retention of the clip to the wheel ▪ Clips are plated and batch salt spray tested to assure compliance to demanding OEM specifications ▪ Use rim gauge number RGP1 to verify correct application
 ▪ *Available in coated & uncoated*



487-12100

NOTE: P=N - Passenger Weights Now Available in Nylon Coating. Call for Details

ASCOT NO.	MFG. NO.	WEIGHT	QTY./ BOX
STEEL			
487-12025	N25	0.25 Oz.	50
487-12050	N50	0.50 Oz.	50
487-12075	N75	0.75 Oz.	50
487-12100	N100	1.00 Oz.	50
487-12125	N125	1.25 Oz.	50
487-12150	N150	1.50 Oz.	50
487-12175	N175	1.75 Oz.	50
487-12200	N200	2.00 Oz.	50
487-12225	N225	2.25 Oz.	50
487-12250	N250	2.50 Oz.	50
487-12275	N275	2.75 Oz.	50
487-12300	N300	3.00 Oz.	50
487-12325	N325	3.25 Oz.	25
487-12350	N350	3.50 Oz.	25
487-12375	N375	3.75 Oz.	25
487-12400	N400	4.00 Oz.	25
487-12450	N450	4.50 Oz.	25
487-12500	N500	5.00 Oz.	25
487-12550	N550	5.50 Oz.	25
487-12600	N600	6.00 Oz.	25

QUANTITY: 25 per box

WHEEL BALANCING // PASSENGER CAR WHEEL WEIGHTS

Contact us for a current year wheel weight application guide!



⚠ **WARNING:** For more information go to www.P65Warnings.ca.gov.

ASCOT SUPPLY CORPORATION

BUYER'S GUIDE

➔ Zinc and Steel Wheel Weights

Passenger Car Wheel Weights (cont.)

MC/ALCMC TYPE

APPLICATIONS - MC/ALCMC SERIES

FORD: All from 1985; **CHRYSLER:** All from 1990 to 1997; some models changed to LHS in 1998; **GM:** Increasingly used starting in 1988; as of 2000 only C5 Corvette remains AWS



ASCOT NO.	PLOMBCO MCZS SERIES NO.	HPW MCZ SERIES NO.	WEIGHT
MC/ALCMC: ZINC			
488-28025	MCZS-0.25	MC025Z	.25 Oz.
488-28050	MCZS-0.50	MC050Z	.50 Oz.
488-28075	MCZS-0.75	MC075Z	.75 Oz.
488-28100	MCZS-1.00	MC100Z	1.00 Oz.
488-28125	MCZS-1.25	MC125Z	1.25 Oz.
488-28150	MCZS-1.50	MC150Z	1.50 Oz.
488-28175	MCZS-1.75	MC175Z	1.75 Oz.
488-28200	MCZS-2.00	MC200Z	2.00 Oz.
488-28225	MCZS-2.25	MC225Z	2.25 Oz.
488-28250	MCZS-2.50	MC250Z	2.50 Oz.
488-28275	MCZS-2.75	MC275Z	2.75 Oz.
488-28300	MCZS-3.00	MC300Z	3.00 Oz.

QUANTITY: 25 per box

AW/ALC TYPE

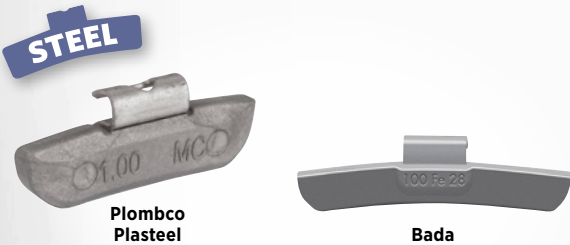
APPLICATIONS - AW/ALC SERIES

FORD: All up to 1984; **CHRYSLER:** All up to 1989; **GM:** All up to 1987; decreasingly used from 1988-2000



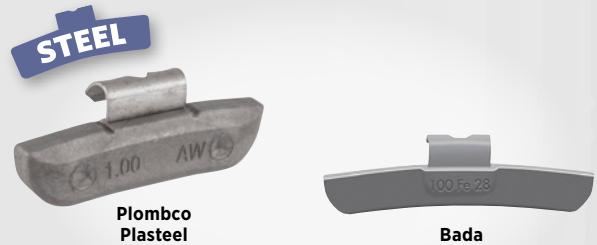
ASCOT NO.	PLOMBCO AWZS SERIES NO.	HPW AWZ SERIES NO.	WEIGHT
AW/ALC: ZINC			
488-78025	AWZS-0.25	AW025Z	.25 Oz.
488-78050	AWZS-0.50	AW050Z	.50 Oz.
488-78075	AWZS-0.75	AW075Z	.75 Oz.
488-78100	AWZS-1.00	AW100Z	1.00 Oz.
488-78125	AWZS-1.25	AW125Z	1.25 Oz.
488-78150	AWZS-1.50	AW150Z	1.50 Oz.
488-78175	AWZS-1.75	AW175Z	1.75 Oz.
488-78200	AWZS-2.00	AW200Z	2.00 Oz.
488-78225	AWZS-2.25	AW225Z	2.25 Oz.
488-78250	AWZS-2.50	AW250Z	2.50 Oz.
488-78275	AWZS-2.75	AW275Z	2.75 Oz.
488-78300	AWZS-3.00	AW300Z	3.00 Oz.

QUANTITY: 25 per box



ASCOT NO.	BADA MCFE SERIES NO.	ASCOT NO. (FOR PLOMBCO PLASTEEL SERIES)	PLOMBCO PLASTEEL SERIES NO.	WEIGHT
MC/ALCMC: STEEL				
488-29025	MCFE025	488-56025	MCPS-0.25	.25 Oz.
488-29050	MCFE050	488-56050	MCPS-0.50	.50 Oz.
488-29075	MCFE075	488-56075	MCPS-0.75	.75 Oz.
488-29100	MCFE100	488-56100	MCPS-1.00	1.00 Oz.
488-29125	MCFE125	488-56125	MCPS-1.25	1.25 Oz.
488-29150	MCFE150	488-56150	MCPS-1.50	1.50 Oz.
488-29175	MCFE175	488-56175	MCPS-1.75	1.75 Oz.
488-29200	MCFE200	488-56200	MCPS-2.00	2.00 Oz.
488-29225	MCFE225	488-56225	MCPS-2.25	2.25 Oz.
488-29250	MCFE250	488-56250	MCPS-2.50	2.50 Oz.
488-29275	MCFE275	488-56275	MCPS-2.75	2.75 Oz.
488-29300	MCFE300	488-56300	MCPS-3.00	3.00 Oz.

QUANTITY: 25 per box



ASCOT NO.	BADA ALFE SERIES NO.	ASCOT NO. (FOR PLOMBCO PLASTEEL SERIES)	PLOMBCO PLASTEEL SERIES NO.	WEIGHT
AW/ALC: STEEL				
488-77025	ALFE025	488-51025	AWPS-0.25	.25 Oz.
488-77050	ALFE050	488-51050	AWPS-0.50	.50 oz.
488-77075	ALFE075	488-51075	AWPS-0.75	.75 Oz.
488-77100	ALFE100	488-51100	AWPS-1.00	1.00 Oz.
488-77125	ALFE125	488-51125	AWPS-1.25	1.25 Oz.
488-77150	ALFE150	488-51150	AWPS-1.50	1.50 Oz.
488-77175	ALFE175	488-51175	AWPS-1.75	1.75 Oz.
488-77200	ALFE200	488-51200	AWPS-2.00	2.00 Oz.
488-77225	ALFE225	488-51225	AWPS-2.25	2.25 Oz.
488-77250	ALFE250	488-51250	AWPS-2.50	2.50 Oz.
488-77275	ALFE275	488-51275	AWPS-2.75	2.75 Oz.
488-77300	ALFE300	488-51300	AWPS-3.00	3.00 Oz.

QUANTITY: 25 per box

WHEEL BALANCING // PASSENGER CAR WHEEL WEIGHTS

➔ Zinc and Steel Wheel Weights

FN/ALCFN TYPE

APPLICATIONS - FN/ALCFN SERIES

TOYOTA: All since 1990; **LEXUS:** All since 1990; **HONDA:** All since 1989; **ACURA:** All since 1990; **NISSAN:** All since 1990; **INFINITI:** All since 1990; **ISUZU:** All since 1997; **MAZDA:** All since 1990; **DAEWOO:** All since 1999



ASCOT NO.	PLOMBCO FNZS SERIES NO.	HPW FNZ SERIES NO.	WEIGHT
FN/ALCFN: ZINC			
488-34005	FNZS-05	FN005Z	5 Grams
488-34010	FNZS-10	FN010Z	10 Grams
488-34015	FNZS-15	FN015Z	15 Grams
488-34020	FNZS-20	FN020Z	20 Grams
488-34025	FNZS-25	FN025Z	25 Grams
488-34030	FNZS-30	FN030Z	30 Grams
488-34035	FNZS-35	FN035Z	35 Grams
488-34040	FNZS-40	FN040Z	40 Grams
488-34045	FNZS-45	FN045Z	45 Grams
488-34050	FNZS-50	FN050Z	50 Grams
488-34055	FNZS-55	FN055Z	55 Grams
488-34060	FNZS-60	FN060Z	60 Grams

QUANTITY: 25 per box

EN/ALCEN TYPE

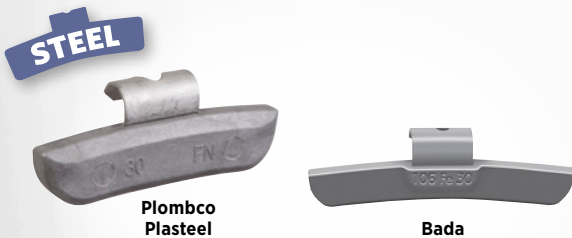
APPLICATIONS - EN/ALCEN SERIES

AUDI: All from 1997; **VW:** All from 1997; Used on many aftermarket alloy wheels with thin rim flanges



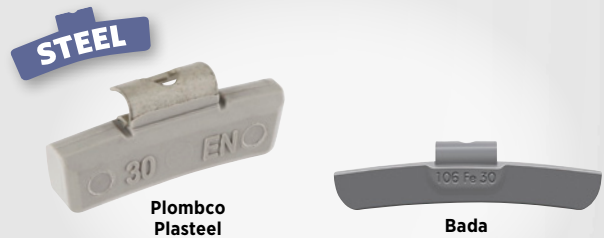
ASCOT NO.	PLOMBCO ENZS SERIES NO.	PERFECT ENZ SERIES NO.	WEIGHT
EN/ALCEN: ZINC			
488-42005	ENZS-05	-	5 Grams
488-42010	ENZS-10	EN010Z	10 Grams
488-42015	ENZS-15	EN015Z	15 Grams
488-42020	ENZS-20	EN020Z	20 Grams
488-42025	ENZS-25	EN025Z	25 Grams
488-42030	ENZS-30	EN030Z	30 Grams
488-42035	ENZS-35	EN035Z	35 Grams
488-42040	ENZS-40	EN040Z	40 Grams
488-42045	ENZS-45	EN045Z	45 Grams
488-42050	ENZS-50	EN050Z	50 Grams
488-42055	ENZS-55	EN055Z	55 Grams
488-42060	ENZS-60	EN060Z	60 Grams

QUANTITY: 25 per box



ASCOT NO.	BADA ENFE SERIES NO.	ASCOT NO. (FOR PLOMBCO PLASTEEL SERIES)	PLOMBCO PLASTEEL SERIES NO.	WEIGHT
FN/ALCFN: STEEL				
488-33005	-	488-53005	FNPS-05	5 Grams
488-33010	FNFE10	488-53010	FNPS-10	10 Grams
488-33015	FNFE15	488-53015	FNPS-15	15 Grams
488-33020	FNFE20	488-53020	FNPS-20	20 Grams
488-33025	FNFE25	488-53025	FNPS-25	25 Grams
488-33030	FNFE30	488-53030	FNPS-30	30 Grams
488-33035	FNFE35	488-53035	FNPS-35	35 Grams
488-33040	FNFE40	488-53040	FNPS-40	40 Grams
488-33045	FNFE45	488-53045	FNPS-45	45 Grams
488-33050	FNFE50	488-53050	FNPS-50	50 Grams
488-33055	FNFE55	488-53055	FNPS-55	55 Grams
488-33060	FNFE60	488-53060	FNPS-60	60 Grams

QUANTITY: 25 per box



ASCOT NO.	BADA ENFE SERIES NO.	ASCOT NO. (FOR PLOMBCO PLASTEEL SERIES)	PLOMBCO PLASTEEL SERIES NO.	WEIGHT
EN/ALCEN: STEEL				
488-32005	-	488-52005	ENPS-05	5 Grams
488-32010	ENFE10	488-52010	ENPS-10	10 Grams
488-32015	ENFE15	488-52015	ENPS-15	15 Grams
488-32020	ENFE20	488-52020	ENPS-20	20 Grams
488-32025	ENFE25	488-52025	ENPS-25	25 Grams
488-32030	ENFE30	488-52030	ENPS-30	30 Grams
488-32035	ENFE35	488-52035	ENPS-35	35 Grams
488-32040	ENFE40	488-52040	ENPS-40	40 Grams
488-32045	ENFE45	488-52045	ENPS-45	45 Grams
488-32050	ENFE50	488-52050	ENPS-50	50 Grams
488-32055	ENFE55	488-52055	ENPS-55	55 Grams
488-32060	ENFE60	488-52060	ENPS-60	60 Grams

QUANTITY: 25 per box

WHEEL BALANCING // PASSENGER CAR WHEEL WEIGHTS

➔ Zinc and Steel Wheel Weights

Passenger Car Wheel Weights (cont.)

IAW/ALCIW TYPE

APPLICATIONS - IAW/ALCIW SERIES

AUDI: Up to 1996; **VW:** Up to 1996; **BMW, CATERA GEO, HYUNDAI, JAGUAR, KIA, MITSUBISHI, SUBARU, SUZUKI, VOLVO**



ASCOT NO.	PLOMBCO IAWZS SERIES NO.	HPW IAWZ SERIES NO.	WEIGHT
IAW/ALCIW: ZINC			
488-27005	IAWZS-05	IAW005Z	5 Grams
488-27010	IAWZS-10	IAW010Z	10 Grams
488-27015	IAWZS-15	IAW015Z	15 Grams
488-27020	IAWZS-20	IAW020Z	20 Grams
488-27025	IAWZS-25	IAW025Z	25 Grams
488-27030	IAWZS-30	IAW030Z	30 Grams
488-27035	IAWZS-35	IAW035Z	35 Grams
488-27040	IAWZS-40	IAW040Z	40 Grams
488-27045	IAWZS-45	IAW045Z	45 Grams
488-27050	IAWZS-50	IAW050Z	50 Grams
488-27055	IAWZS-55	IAW055Z	55 Grams
488-27060	IAWZS-60	IAW060Z	60 Grams

QUANTITY: 25 per box

T/TTC TYPE

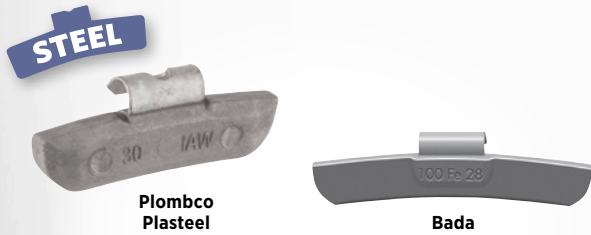
APPLICATIONS - T/TTC SERIES

CHEVROLET: Full Size Pick Up, Suburban, Yukon, Tahoe from 2000; **FORD:** Expedition from 1997, F-100, F-150 from 1997; **LINCOLN:** Lincoln Navigator with alloy & steel wheels from 1998



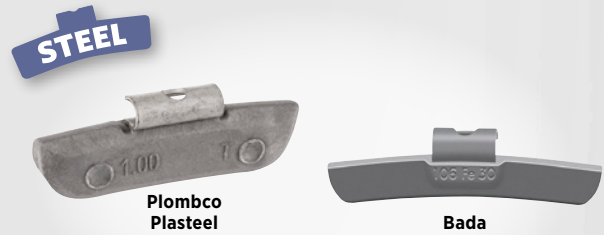
ASCOT NO.	HPW T2 SERIES NO.	WEIGHT
T/TTC: ZINC		
488-79025	T025Z	.25 Oz.
488-79050	T050Z	.50 Oz.
488-79075	T075Z	.75 Oz.
488-79100	T100Z	1.00 Oz.
488-79125	T125Z	1.25 Oz.
488-79150	T150Z	1.50 Oz.
488-79175	T175Z	1.75 Oz.
488-79200	T200Z	2.00 Oz.
488-79225	T225Z	2.25 Oz.
488-79250	T250Z	2.50 Oz.
488-79275	T275Z	2.75 Oz.
488-79300	T300Z	3.00 Oz.

QUANTITY: 25 per box



ASCOT NO.	BADA IWFE SERIES NO.	ASCOT NO. (FOR PLOMBCO PLASTEEL SERIES)	PLOMBCO PLASTEEL SERIES NO.	WEIGHT
IAW/ALCIW: STEEL				
488-26005	-	488-54005	IAWPS-05	5 Grams
488-26010	IWFE10	488-54010	IAWPS-10	10 Grams
488-26015	IWFE15	488-54015	IAWPS-15	15 Grams
488-26020	IWFE20	488-54020	IAWPS-20	20 Grams
488-26025	IWFE25	488-54025	IAWPS-25	25 Grams
488-26030	IWFE30	488-54030	IAWPS-30	30 Grams
488-26035	IWFE35	488-54035	IAWPS-35	35 Grams
488-26040	IWFE40	488-54040	IAWPS-40	40 Grams
488-26045	IWFE45	488-54045	IAWPS-45	45 Grams
488-26050	IWFE50	488-54050	IAWPS-50	50 Grams
488-26055	IWFE55	488-54055	IAWPS-55	55 Grams
488-26060	IWFE60	488-54060	IAWPS-60	60 Grams

QUANTITY: 25 per box



ASCOT NO.	BADA TFE SERIES NO.	ASCOT NO. (FOR PLOMBCO PLASTEEL SERIES)	PLOMBCO PLASTEEL SERIES NO.	WEIGHT
T/TTC: STEEL				
489-19025	TFE025	488-57025	TPS-0.25	.25 Oz.
489-19050	TFE050	488-57050	TPS-0.50	.50 Oz.
489-19075	TFE075	488-57075	TPS-0.75	.75 Oz.
489-19100	TFE100	488-57100	TPS-1.00	1.00 Oz.
489-19125	TFE125	488-57125	TPS-1.25	1.25 Oz.
489-19150	TFE150	488-57150	TPS-1.50	1.50 Oz.
489-19175	TFE175	488-57175	TPS-1.75	1.75 Oz.
489-19200	TFE200	488-57200	TPS-2.00	2.00 Oz.
489-19225	TFE225	488-57225	TPS-2.25	2.25 Oz.
489-19250	TFE250	488-57250	TPS-2.50	2.50 Oz.
489-19275	TFE275	488-57275	TPS-2.75	2.75 Oz.
489-19300	TFE300	488-57300	TPS-3.00	3.00 Oz.

QUANTITY: 25 per box

WHEEL BALANCING // PASSENGER CAR WHEEL WEIGHTS

➔ Zinc and Steel Wheel Weights

P/T TYPE

APPLICATIONS - P/T SERIES

STANDARD PASSENGER CAR with 13" to 15" steel wheels



ASCOT NO. (FOR PLOMBCO REGZ SERIES)	PLOMBCO REGZ SERIES NO.	ASCOT NO. (FOR COATED HZW PZ SERIES)	COATED HPW PZ SERIES NO.	ASCOT NO. (FOR UNCOATED HZW PZU SERIES)	UNCOATED HPW PZU SERIES NO.	WGT.
P/T: ZINC						
488-14025	REGZ-0.25	488-15025	P025Z	487-25025	P025ZU	.25 Oz.
488-14050	REGZ-0.50	488-15050	P050Z	487-25050	P050ZU	.50 Oz.
488-14075	REGZ-0.75	488-15075	P075Z	487-25075	P075ZU	.75 Oz.
488-14100	REGZ-1.00	488-15100	P100Z	487-25100	P100ZU	1.00 Oz.
488-14125	REGZ-1.25	488-15125	P125Z	487-25125	P125ZU	1.25 Oz.
488-14150	REGZ-1.50	488-15150	P150Z	487-25150	P150ZU	1.50 Oz.
488-14175	REGZ-1.75	488-15175	P175Z	487-25175	P175ZU	1.75 Oz.
488-14200	REGZ-2.00	488-15200	P200Z	487-25200	P200ZU	2.00 Oz.
488-14225	REGZ-2.25	488-15225	P225Z	487-25225	P225ZU	2.25 Oz.
488-14250	REGZ-2.50	488-15250	P250Z	487-25250	P250ZU	2.50 Oz.
488-14275	REGZ-2.75	488-15275	P275Z	487-25275	P275ZU	2.75 Oz.
488-14300	REGZ-3.00	488-15300	P300Z	487-25300	P300ZU	3.00 Oz.

QUANTITY: 25 per box



ASCOT NO.	BADA PFE SERIES NO.	WEIGHT
P/T: STEEL		
488-13025	PFE025	5 Grams
488-13050	PFE050	10 Grams
488-13075	PFE075	15 Grams
488-13100	PFE100	20 Grams
488-13125	PFE125	25 Grams
488-13150	PFE150	30 Grams
488-13175	PFE175	35 Grams
488-13200	PFE200	40 Grams
488-13225	PFE225	45 Grams
488-13250	PFE250	50 Grams
488-13275	PFE275	55 Grams
488-13300	PFE300	60 Grams
488-13325	PFE325	-
488-13350	PFE350	-

QUANTITY: 25 per box

LH/ALCLH TYPE

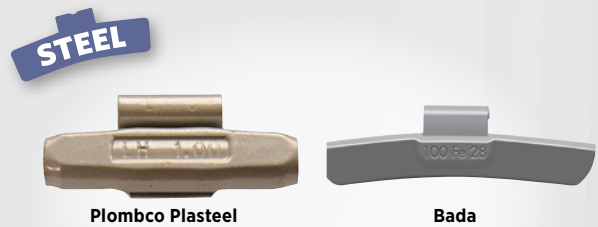
APPLICATIONS - LH/ALCLH SERIES

CHRYSLER: Used on LH platform (Intrepid, Concorde, LHS, 300M) and all Mini Van models since 1998. Also used on 2000 Neon, 2001 PT Cruiser and 2001 Sebring & Stratus sedans and convertibles



ASCOT NO.	PLOMBCO LHZS SERIES NO.	HPW LHZ SERIES NO.	WEIGHT
LH/ALCLH: ZINC			
488-74025	LHZS-0.25	LH025Z	.25 Oz.
488-74050	LHZS-0.50	LH050Z	.50 Oz.
488-74075	LHZS-0.75	LH075Z	.75 Oz.
488-74100	LHZS-1.00	LH100Z	1.00 Oz.
488-74125	LHZS-1.25	LH125Z	1.25 Oz.
488-74150	LHZS-1.50	LH150Z	1.50 Oz.
488-74175	LHZS-1.75	LH175Z	1.75 Oz.
488-74200	LHZS-2.00	LH200Z	2.00 Oz.
488-74225	LHZS-2.25	LH225Z	2.25 Oz.
488-74250	LHZS-2.50	LH250Z	2.50 Oz.
488-74275	LHZS-2.75	LH275Z	2.75 Oz.
488-74300	LHZS-3.00	LH300Z	3.00 Oz.

QUANTITY: 25 per box



ASCOT NO.	PLOMBCO LHFE SERIES NO.	BADA LHFE SERIES NO.	WEIGHT
LH/ALCLH: STEEL			
488-64025	LHFe-0.25	LHFE025	.25 Oz.
488-64050	LHFe-0.50	LHFE050	.50 Oz.
488-64075	LHFe-0.75	LHFE075	.75 Oz.
488-64100	LHFe-1.00	LHFE100	1.00 Oz.
488-64125	LHFe-1.25	LHFE125	1.25 Oz.
488-64150	LHFe-1.50	LHFE150	1.50 Oz.
488-64175	LHFe-1.75	LHFE175	1.75 Oz.
488-64200	LHFe-2.00	LHFE200	2.00 Oz.
488-64225	LHFe-2.25	LHFE225	2.25 Oz.
488-64250	LHFe-2.50	LHFE250	2.50 Oz.
488-64275	LHFe-2.75	LHFE275	2.75 Oz.
488-64300	LHFe-3.00	LHFE300	3.00 Oz.

QUANTITY: 25 per box

WHEEL BALANCING // PASSENGER CAR WHEEL WEIGHTS

➔ Lead Wheel Weights

Truck Wheel Weights

"LT1" SERIES - WHEEL WEIGHTS

▪ For light trucks, 3/4 & 1 ton vehicles with either tube or tubeless rims where such rims are too thick for "P" series weights ▪ For use on heavier trucks with thin rim flanges ▪ Use "P" series weights on 1/2 ton vehicles ▪ Use rim gauge RG2 to verify correct application

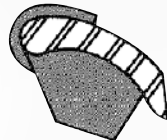
NOTE: LT1 = BTS

ASCOT NO.	MFG. NO.	WEIGHT
"LT1" SERIES		
489-05005	LT1 50	0.5 Oz.
489-05010	LT1 100	1.0 Oz.
489-05015	LT1 150	1.5 Oz.
489-05020	LT1 200	2.0 Oz.
489-05025	LT1 250	2.5 Oz.
489-05030	LT1 300	3.0 Oz.
489-05035	LT1 350	3.5 Oz.
489-05040	LT1 400	4.0 Oz.
489-05045	LT1 450	4.5 Oz.
489-05050	LT1 500	5.0 Oz.
489-05060	LT1 600	6.0 Oz.

QUANTITY: 25 per box



489-05020



"RC" SERIES - WHEEL WEIGHTS

▪ Used on heavy duty trucks with Firestone or Accuride, Radial Commander rims ▪ Can be used with new strip steel rims with curved edges ▪ Use rim gauge RG2 to verify correct application

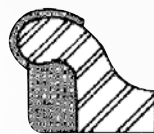
NOTE: RC = BTRC

ASCOT NO.	MFG. NO.	WEIGHT
"RC" SERIES		
489-09020	RC 020	2.0 Oz.
489-09030	RC 030	3.0 Oz.
489-09040	RC 040	4.0 Oz.
489-09060	RC 060	6.0 Oz.
489-09080	RC 080	8.0 Oz.
489-09100	RC 100	10.0 Oz.
489-09120	RC 120	12.0 Oz.

QUANTITY: 25 pieces per box except 10 and 12 Oz. are 20 per box



489-09040



"CT" SERIES - WHEEL WEIGHTS

▪ Used on heavy duty trucks with Firestone or Accuride, Budd or Goodyear tubeless rims (except steel rims with curved edges) ▪ Primarily used on rim widths of 6.75", 7.50" and 8.25"

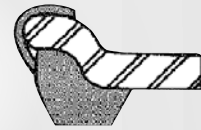
NOTE: CT = BTLT

ASCOT NO.	MFG. NO.	WEIGHT
"CT" SERIES		
489-02020	CT 200	2.0 Oz.
489-02030	CT 300	3.0 Oz.
489-02040	CT 400	4.0 Oz.
489-02060	CT 600	6.0 Oz.
489-02080	CT 800	8.0 Oz.
489-02100	CT 1000	10.0 Oz.
489-02120	CT 1200	12.0 Oz.
489-02140	CT 1400	14.0 Oz.
489-02160	CT 1600	16.0 Oz.

QUANTITY: 25 per box



489-02060



"TS" SERIES - WHEEL WEIGHTS FOR LIGHT TRUCK ALLOY WHEELS

▪ All 1997 and newer Ford trucks with alloy and steel wheels use the "TS" series wheel weight ▪ For use on many domestic trucks with decorative steel wheels, Ford truck new alloy wheels ▪ Weights fit new domestic full size trucks equipped with wheels using thicker flanges and chrome or powder coatings ▪ Weights larger and use different clip configurations

NOTE: TS = TN = TTC

APPLICATIONS - TS SERIES

CHEVROLET: Full Size Pick Up, Suburban, Yukon, Tahoe from 2000; **FORD:** Expedition from 1997, F-100, F-150 from 1997; **LINCOLN:** Lincoln Navigator with alloy & steel wheels from 1998

ASCOT NO.	MFG. NO.	WEIGHT
"TS" SERIES		
489-08025	TS 25	0.25 Oz.
489-08050	TS 50	0.50 Oz.
489-08075	TS 75	0.75 Oz.
489-08100	TS 100	1.00 Oz.
489-08125	TS 125	1.25 Oz.
489-08150	TS 150	1.50 Oz.
489-08175	TS 175	1.75 Oz.
489-08200	TS 200	2.0 Oz.
489-08225	TS 225	2.25 Oz.
489-08250	TS 250	2.50 Oz.
489-08275	TS 275	2.75 Oz.
489-08300	TS 300	3.0 Oz.
489-08325	TS 325	3.25 Oz.
489-08350	TS 350	3.50 Oz.
489-08375	TS 375	3.75 Oz.
489-08400	TS 400	4.0 Oz.
489-08425	TS 425	4.25 Oz.
489-08450	TS 450	4.50 Oz.
489-08475	TS 475	4.75 Oz.
489-08500	TS 500	5.0 Oz.

QUANTITY: 25 per box



489-08100

WHEEL BALANCING // TRUCK WHEEL WEIGHTS

➔ Lead and Zinc Wheel Weights

"17" SERIES - WHEEL WEIGHTS

- Most popular weight for the medium duty truck
- Used on most trucks with tube type tires

NOTE: 17 = BTLM + E

ASCOT NO.	MFG. NO.	WEIGHT
"17" SERIES		
489-55010	17100	1.0 Oz.
489-55020	17200	2.0 Oz.
489-55030	17300	3.0 Oz.
489-55040	17400	4.0 Oz.
489-55050	17500	5.0 Oz.
489-55060	17600	6.0 Oz.
489-55080	17800	8.0 Oz.
489-55100	171000	10.0 Oz.
489-55120	171200	12.0 Oz.
489-55140	171400	14.0 Oz.
489-55160	171600	16.0 Oz.

QUANTITY: 25 pieces per box except 10 & 12 Oz.; 20/box & 14 & 16 Oz.; 10/box



489-55040



"TAL" SERIES - WHEEL PROTECTORS® WEIGHTS

- Special weight for all Alcoa and Accuride (from 1983) aluminum tubeless heavy truck wheels; fits both sides of the wheel
- Replace the "OS-TAL" and "DS-TAL" series
- Use rim gauge RG2 to verify correct application (either OS-TAL or DS-TAL slot)
- Recommend coated weights on all vehicles having alloy wheels

NOTE: TAL = BTCAL

ASCOT NO.	MFG. NO.	WEIGHT
"TAL" SERIES		
489-10020	TALS-2.00	2.0 Oz.
489-10030	TALS-3.00	3.0 Oz.
489-10040	TALS-4.00	4.0 Oz.
489-10060	TALS-6.00	6.0 Oz.
489-10080	TALS-8.00	8.0 Oz.

QUANTITY: 25 per box



489-10030

CTZ TYPE

- Used on heavy duty trucks with Firestone or Accuride, Budd or Goodyear tubeless rims (except steel rims with curved edges)
- Primarily used on rim widths of 6.75", 7.50" and 8.25"

NOTE: CT = BTLT



Plombco

ASCOT NO.	PLOMBCO CTZ SERIES NO.	WEIGHT
CT: ZINC		
489-24200	CTZ-2.00	2.0 Oz.
489-24300	CTZ-3.00	3.0 Oz.
489-24400	CTZ-4.00	4.0 Oz.
489-24500	CTZ-5.00	5.0 Oz.
489-24600	CTZ-6.00	6.0 Oz.

QUANTITY: 25 per box

I7Z TYPE

- Most popular weight for the medium duty truck
- Used on most trucks with tube type tires

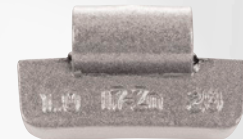
NOTE: 17 = BTLM + E

ASCOT NO.	PLOMBCO I-7Z SERIES NO.	HPW I7Z SERIES NO.	WGT.
I7: ZINC			
489-22100	I7Z-1.00	I7Z-010	1.0 Oz.
489-22150	-	I7Z-015	1.5 Oz.
489-22200	I7Z-2.00	I7Z-020	2.0 Oz.
489-22250	-	I7Z-025	2.5 Oz.
489-22300	I7Z-3.00	I7Z-030	3.0 Oz.
489-22350	-	I7Z-035	3.5 Oz.
489-22400	I7Z-4.00	I7Z-040	4.0 Oz.
489-22500	I7Z-5.00	I7Z-050	5.0 Oz.
489-22600	I7Z-6.00	-	6.0 Oz.
484-22800	I7Z-8.00	-	8.0 Oz.

QUANTITY: 25 per box except 10 & 12 Oz.; 20/box & 14 & 16 Oz.; 10/box



Plombco



HPW

WHEEL BALANCING // TRUCK WHEEL WEIGHTS

➔ Zinc Wheel Weights

Truck Wheel Weights (cont.)

LT1Z TYPE

▪ For light trucks, 3/4 & 1 ton vehicles with either tube or tubeless rims where such rims are too thick for "P" series weights ▪ For use on heavier trucks with thin rim flanges ▪ Use "P" series weights on 1/2 ton vehicles ▪ Use rim gauge RG2 to verify correct application
NOTE: LT1 = BTS

ASCOT NO.	PLOMBCO		WGT.
	LT1Z SERIES NO.	HPW LT1Z SERIES NO.	
LT1: ZINC			
489-21050	LT1Z-0.50	LT1Z-005	.5 Oz.
489-21100	LT1Z-1.00	LT1Z-010	1.0 Oz.
489-21150	LT1Z-1.50	LT1Z-015	1.5 Oz.
489-21200	LT1Z-2.00	LT1Z-020	2.0 Oz.
489-21250	LT1Z-2.50	LT1Z-025	2.5 Oz.
489-21300	LT1Z-3.00	LT1Z-030	3.0 Oz.
489-21350	LT1Z-3.50	LT1Z-035	3.5 Oz.
489-21400	LT1Z-4.00	LT1Z-040	4.0 Oz.
489-21450	-	LT1Z-045	4.5 Oz.
489-21500	-	LT1Z-050	5.0 Oz.

QUANTITY: 25 per box



Plombco



HPW

RCZ TYPE

▪ Used on heavy duty trucks with Firestone or Accuride, Radial Commander rims ▪ Can be used with new strip steel rims with curved edges ▪ Use rim gauge RG2 to verify correct application

ASCOT NO.	PLOMBCO RCZ		WEIGHT
	SERIES NO.		
RC: ZINC			
489-64804	RCZ-2.00		2.00 Oz.
489-64806	RCZ-3.00		3.00 Oz.
489-64808	RCZ-4.00		4.00 Oz.
489-64810	RCZ-5.00		5.00 Oz.
489-64812	RCZ-6.00		6.00 Oz.

QUANTITY: 25 per box



Plombco

TALZ TYPE

▪ Special weight for all Alcoa and Accuride (from 1983) aluminum tubeless heavy truck wheels; fits both sides of the wheel ▪ Replace the "OS-TAL" and "DS-TAL" series ▪ Use rim gauge RG2 to verify correct application (either OS-TAL or DS-TAL slot) ▪ Recommend coated weights on all vehicles having alloy wheels
NOTE: TALS = TAL = BTCAL

ASCOT NO.	PLOMBCO		WGT.
	TALZ-S SERIES NO.	HPW TALZ SERIES NO.	
TAL: ZINC			
489-23100	-	TALZ-010	1.0 Oz.
489-23200	TALZS-2.00	TALZ-020	2.0 Oz.
489-23300	TALZS-3.00	TALZ-030	3.0 Oz.
489-23400	TALZS-4.00	TALZ-040	4.0 Oz.
489-23500	TALZS-5.00	TALZ-050	5.0 Oz.
489-23600	TALZS-6.00	TALZ-060	6.0 Oz.

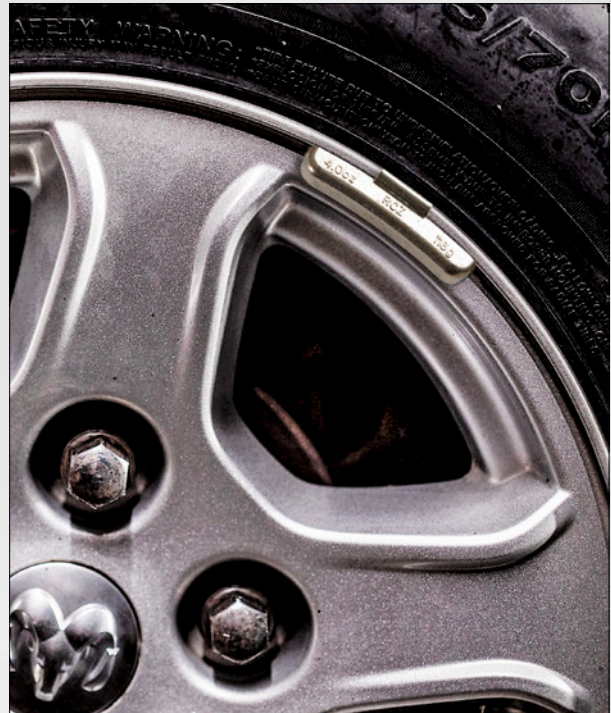
QUANTITY: 25 per box



Plombco



HPW



Truck wheel weights in use.

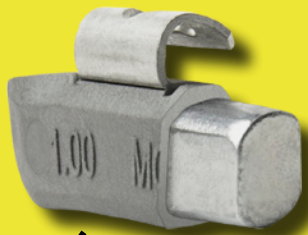
plasteel®

HYBRID-LOCK™
PLASTIC + STEEL BODY

HARDENED
STEEL CLIP

NEW
CURVED
APPEARANCE

NEW
ALUMI-FLAKE™
METALLIC MATERIAL



PLASTIC
FOR SOFTNESS

STEEL
FOR STRENGTH



RECYCLABLE
MATERIALS



EASY
APPLICATION



SCRATCHLESS
INSTALLATION



TECHNICIAN
APPROVED

AVAILABLE IN: **MC** **FN** **AW** **IAW** **EN** **T**

watch our **NEW** commercial on 

TESTED.
PROVEN.
TRUSTED.



➔ Lead, Zinc and Steel Adhesive Wheel Weights



Adhesive Wheel Weights

PERFECT QUIKSTIK™ SEGMENTED ADHESIVE STYLE LEAD WHEEL WEIGHTS

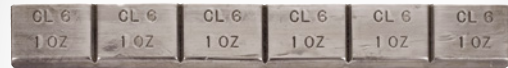
▪ **Only pre-cut pre-taped weight** ▪ No cutting, no pre-contouring and no waste ▪ Each segment is stamped with the actual weight in ounces and grams ▪ Available in 1/2", 3/4" low profile and 3/4" truck weight design ▪ Wheel weight for racing/off road performance applications



484-11360



484-13360



484-00006



484-30360



484-00112

ASCOT NO.	MFG. NO.	WEIGHT	DESCRIPTION
-----------	----------	--------	-------------

PERFECT LEAD ADHESIVE

484-11360	100360	3 Oz.	Pre-Taped Weight 30 Strips of .25 Oz. Segments
484-10720	100720	3 Oz.	Pre-Taped Weight 60 Strips of .25 Oz. Segments
484-00012	200624S	3 Oz.	Pre-Taped Weight 48 Strips of .25 Oz. Segments
484-13360	200624	3 Oz.	Pre-Taped Weight 52 Strips of .25 Oz. Segments
484-30360	300360	6 Oz.	Pre-Taped Truck Weight 30 Strips of 1 Oz. Segments
484-00006	CL6	6 Oz.	Pre-Taped Truck Weight 30 Strips of 1 Oz. Segments
484-00112	CL12	12 Oz.	Pre-Taped Truck Weight 8 Strips of 2 Oz. Segments

BADA TAPE-A-WEIGHTS FOR RVS & LIGHT TRUCKS



484-07127

ASCOT NO.	MFG. NO.	DESCRIPTION
-----------	----------	-------------

BADA TAPE-A-WEIGHTS FOR RVS & LIGHT TRUCKS

484-07127	7127	Break-A-Way Weights, 16 Piece, .5 Oz. Segments, 3/4" x 12", 384 Segments
484-03101	3101	Cut-A-Way Weights, 12 Piece, 1 Oz. Segments, 1" x 12", 216 Segments
484-06001	6001	16 Piece, 1 Oz. Segments, 3/4" x 12", 192 Segments



WHEEL BALANCING // ADHESIVE WHEEL WEIGHTS

➔ Lead, Zinc and Steel Adhesive Wheel Weights

BADA TAPE-A-WEIGHTS FOR PASSENGER CARS



484-05101

ASCOT NO.	MFG. NO.	DESCRIPTION
BADA TAPE-A-WEIGHTS FOR PASSENGER CARS		
484-05101	5101	Cut-A-Way, 15 Pieces, .5 Oz. Segments, 1/2" x 12", 180 Segments
484-07125	7125	Break-A-Way Weights, 30 Pieces, .25 Oz. Segments, 1/2" x 12", 720 Segments
484-07126	7126	Low Profile, 348 Pieces, .25 Oz. Segments, 3/4" x 6", 4176 Segments
484-09025	9902-500	High Performance Racing, 24 Pieces, .5 Oz. Segments, 3/4" x 12", 144 Segments (Used by NASCAR and suppliers of Firestone Racing CART, Indy Light and IRL)
484-09065	9901-65	Low Profile, 174 Pieces, .5 Oz. Segments, 3/4" x 12", 2088 Segments
484-09165	9101-65	Cut-A-Way, 174 Pieces, .5 Oz. Segments, 1/2" x 12", 2088 Segments
484-09405	9405 Chrome	Cut-A-Way, 12 Pieces, .5 Oz. Segments, 1/2" x 12", 144 Segments (For Use on Chrome Plated Wheels)

BADA TAPE-A-WEIGHTS FOR MOTORCYCLES



484-01201

ASCOT NO.	MFG. NO.	DESCRIPTION
BADA TAPE-A-WEIGHTS FOR MOTORCYCLES		
484-01201	1201	Cut-A-Way Weights, 15 Piece, .5 Oz. Segments, 3/8" x 12", 180 Segments
484-02101	2101	Cut-A-Way Weights, 30 Piece, .5 Oz. Segments, 3/8" x 12", 360 Segments

PLOMBCO LEAD ADHESIVE: RUBBER TAPE



312 - Rubber Tape



314 - Rubber Tape



412 - Rubber Tape



612 - Rubber Tape

ASCOT NO.	MFG. NO.	TAPE TYPE	DESCRIPTION
PLOMBCO LEAD ADHESIVE: RUBBER TAPE			
484-31230	312-30	Rubber Tape	30 - 6" Bars - 1/4 Oz. Segments - 3/4" Wide
484-31252	312-52	Rubber Tape	52 - 6" Bars - 1/4 Oz. Segments - 3/4" Wide
484-31430	314-30	Rubber Tape	30 - 6" Bars - 1/4 Oz. Segments - 1/2" Wide
484-41215	412-15	Rubber Tape	15 - 6" Bars - 1/2 Oz. Segments - 3/4" Wide
484-41230	412-30	Rubber Tape	30 - 6" Bars - 1/2 Oz. Segments - 3/4" Wide
484-51215	512-15	Rubber Tape	15 - 6" Bars - 1 Oz. Segments - 3/4" Wide
484-61215	612-15	Rubber Tape	15 - 6" Bars - 2 Oz. Segments - 1-1/4" Wide

PLOMBCO LEAD ADHESIVE: COLD WEATHER TAPE

▪ Save time and money by eliminating the need to heat the wheel when temperatures are below 40 degrees fahrenheit



312 - Rubber Tape, Cold Weather Tape



314 - Rubber Tape, Cold Weather Tape



412 - Rubber Tape, Cold Weather Tape



612 - Rubber Tape, Cold Weather Tape

ASCOT NO.	MFG. NO.	TAPE TYPE	DESCRIPTION
PLOMBCO LEAD ADHESIVE: COLD WEATHER TAPE			
484-31231	312-30BCW	Cold Weather	30 - 6" Bars - 1/4 Oz. Segments - 3/4" Wide, Black
484-31233	312-30CW	Cold Weather	30 - 6" Bars - 1/4 Oz. Segments - 3/4" Wide
484-31432	314-30CW	Cold Weather	30 - 6" Bars - 1/4 Oz. Segments - 1/2" Wide
484-33252	312-52CW	Cold Weather	52 - 6" Bars - 1/4 Oz. Segments - 3/4" Wide
484-41232	412-30CW	Cold Weather	30 - 6" Bars - 1/2 Oz. Segments - 3/4" Wide
484-53215	512-15CW	Cold Weather	15 - 6" Bars - 1 Oz. Segments - 3/4" Wide
484-63215	612-15CW	Cold Weather	15 - 6" Bars - 2 Oz. Segments - 1-1/4" Wide

WHEEL BALANCING // ADHESIVE WHEEL WEIGHTS

→ Steel Adhesive Wheel Weights

Adhesive Wheel Weights (cont.)

ALL STEEL

STEEL SEGMENTED ADHESIVE-STYLE WHEEL WEIGHTS

▪ **Pre-cut weights** ▪ No cutting, no pre-contouring and no waste ▪ Each segment is stamped with the actual weight in ounces ▪ US white "quick" tape



484-16001



484-17026



484-17127



484-27026



484-37026

ASCOT NO.	MFG. NO.	DESCRIPTION
STEEL SEGMENTED ADHESIVE-STYLE WHEEL WEIGHTS		
484-16001	1184	1 Oz. Steel Adhesive Wheel Weights: 1 Oz. Strips, 4 Segments (18 Strips per Box)
484-17026	14308	1/4 Oz. Steel Adhesive Wheel Weights with Plastic Powder Coating: 1/4 Oz. Strips, 8 Segments (30 Strips per Box)
484-17127	12187	1/2 Oz. Steel Adhesive Wheel Weights: 1/2 Oz. Strips, 7 Segments (18 Strips per Box)
484-27026	14308W	1/4 Oz. White Steel Adhesive Wheel Weights with White Powder Coating: 1/4 Oz. Strips, 8 Segments (30 Strips per Box)
484-37026	14308B	1/4 Oz. Black Steel Adhesive Wheel Weights with Black Powder Coating: 1/4 Oz. Strips, 8 Segments (30 Strips per Box)

PERFECT QUIKSTIK™ SEGMENTED ADHESIVE-STYLE STEEL WHEEL WEIGHTS

▪ **Only pre-cut, pre-taped weight** ▪ No cutting, no pre-contouring and no waste ▪ Each segment is stamped with the actual weight in ounces and grams



484-00300



484-20576



484-30336

ASCOT NO.	MFG. NO.	DESCRIPTION
PERFECT QUIK-STIK SEGMENTED ADHESIVE-STYLE STEEL WHEEL WEIGHTS		
484-00300	SST300N	Pre-Taped Steel Weight - 3 Oz. Segments
484-00060	SSG060N	Pre-Taped Steel Weight - 60 Gram Segments
484-20624	200624ST	Pre-Taped Steel Weight - 3 Oz. Segments
484-20576	200576FE	Pre-Taped Steel Weight - 3 Oz. Segments (No QuikTAB™ feature.)
484-22576	200576FEBLK	Pre-Taped Black Steel Weight - 3 Oz. Segments (No QuikTab Feature)
484-30336	300336FE	Pre-Taped Steel Weight - 6 Oz. Segments
484-31360	300360ST	Pre-Taped Steel Weight - 6 Oz. Segments

BADA STEEL COATED TAPE-A-WEIGHTS STRIPS



484-75250



484-75550



484-75100

ASCOT NO.	MFG. NO.	DESCRIPTION
BADA STEEL COATED TAPE-A-WEIGHTS STRIPS		
484-75250	7525FE	Poly Coated Speed Strip 12 Segments: 3 Oz. Strips (40 Strips per Box)
484-75550	7550FE	Poly Coated Speed Strip 10 Segments: 5 Oz. Strips (24 Strips per Box)
484-75100	75100FE	Poly Coated Speed Strip 12 Segments: 7 Oz. Strips (16 Strips per Box)

WHEEL BALANCING // ADHESIVE WHEEL WEIGHTS

ALL STEEL

PLOMBCO STEEL ADHESIVE WHEEL WEIGHTS

ASCOT NO.	MFG. NO.	TAPE TYPE	DESCRIPTION
PLOMBCO STEEL ADHESIVE WHEEL WEIGHTS			
484-32230	312Fe-30CW	Cold Weather	30 * 6" Bars Precut in .25 Oz. Segments of .75" Wide
484-32252	312Fe-52CW	Cold Weather	52 * 6" Bars Precut in .25 Oz. Segments of .75" Wide
484-41226	412Fe	OE Adhesive	6", Bars Precut in .5 Oz. Segments of .75" Wide
484-30836	308Fe-36	Rubber Base	2 Oz. strips (1/4 Oz.) (36 Strips per Box)
484-28408	408FE-28	Rubber Base	Steel Adhesive Wheel Weight: 4 Oz. (28 Strips per Box)
484-28418	VL408FES-28	Rubber Base	Value Line Steel Adhesive Wheel Weight: 4 Oz. (28 Strips per Box)
484-28428	VL408FEB-28	Rubber Base	Value Line Black Steel Adhesive Wheel Weight: 4 Oz. (28 Strips per Box)
484-31234	312Fe-30	Rubber Base	Steel Adhesive Wheel Weight: 3 Oz. (30 Strips per Box)
484-31500	VL315FEB	Rubber Base	Value Line Black Steel Adhesive Wheel Weight Roll: 15 lb., 1/4 Oz. Segments
484-31501	VL315FES	Rubber Base	Value Line Steel Adhesive Wheel Weight Roll: 15 lb., 1/4 Oz. Segments
484-35320	320Fe	Rubber Base	Steel Adhesive Wheel Weight Roll: 20 lb., .25 Oz. Segments
484-40848	408Fe-48	Rubber Base	408Fe-48 Steel Adhesive Wheel Weight: 4 Oz. (48 Strips/Box)
484-41500	VL415FEB	Rubber Base	Value Line Black Steel Adhesive Wheel Weight Roll: 15 lb., 1/2 Oz. Segments
484-41501	VL415FES	Rubber Base	Value Line Steel Adhesive Wheel Weight Roll: 15 lb., 1/2 Oz. Segments
484-42010	420Fe	Rubber Base	Steel Adhesive Wheel Weight Roll: 20 lb., .50 Oz. Segments
484-48312	VL312FES-48	Rubber Base	Value Line Steel Adhesive Wheel Weight: 3 Oz. (48 Strips per Box)
484-48322	VL312FEB-48	Rubber Base	Value Line Black Steel Adhesive Wheel Weight: 3 Oz. (48 Strips per Box)
484-50615	506Fe-15	Rubber Base	Steel Adhesive Wheel Weight: 6 Oz. (15 Strips per Box)
484-52001	520Fe	Rubber Base	Steel Adhesive Wheel Weight Roll: 20 lb., 1 Oz. Segments
484-52312	312FE-52	Rubber Base	Steel Adhesive Wheel Weight: 3 Oz. (52 Strips per Box)



Enjoy the benefits and comfort of balancing your wheels by using adhesive wheel weights. The use of these products reduces maintenance costs and prolongs the life of your tires.



484-28408



484-28418



484-28428



484-31234



484-41226



484-48312



484-48322



484-50615

WHEEL BALANCING // ADHESIVE WHEEL WEIGHTS

➔ Steel Adhesive Wheel Weights

Adhesive Wheel Weights (cont.)

BLACK STEEL ADHESIVE WHEEL WEIGHTS

- USA "Easy Peel" tape
- Tape on top



484-10101



484-10201



484-10301

ASCOT NO. MFG. NO. DESCRIPTION

BLACK STEEL ADHESIVE WHEEL WEIGHTS		
484-10101	FSF101B	1/4 Oz. Black Steel Adhesive Wheel Weight: 3 Oz. (48 Strips per Box)
484-10201	FSF102B	1/2 Oz. Black Steel Adhesive Wheel Weight: 3 Oz. (48 Strips per Box)
484-10301	FSF103B	1 Oz. Black Steel Adhesive Wheel Weight: 4 Oz. (48 Strips per Box)
484-67026	24308B	1/2 Oz. Black Steel Adhesive Wheel Weight: 3.5 Oz. Strip (18 Strips per Box)
484-77026	34308B	1 Oz. Black Steel Adhesive Wheel Weight: 4 Oz. Strip (18 Strips per Box)



Please contact us for further details regarding **WHEEL WEIGHTS.**

HPW & PERFECT STEEL ADHESIVE WHEEL WEIGHT ROLLS



- Familiar design: Features all of the same standard steel QuikStik characteristics
- Only use the amount of weight you need each time you balance
- Simply pull and rip
- No cutting and no measuring
- **MADE IN THE USA**



484-21576



484-32360

ASCOT NO. MFG. NO. DESCRIPTION

PERFECT STEEL ROLLS		
484-03200	SST32000N	.25 Oz. (1280 Segments)
484-07500	SSG7500N	5G (1500 Segments)
484-21576	200576FER	0.25 Oz. (704 Segments)
484-21624	200624STR	.25 Oz. (1280 Segments)
484-32360	300360STR	.5 Oz. (640 Segments)



BADA STEEL COATED TAPE-A-WEIGHT 10 LB. ROLL



484-70263

ASCOT NO. MFG. NO. DESCRIPTION

BADA STEEL COATED TAPE-A-WEIGHT 10 LB. ROLL		
484-70262	7026FER	Roll Only
484-73252	7325FER10	.25 oz Magni Coated Speed Strip™
484-75250	7525FER10	.25 oz Poly-Coated Speed Strip™
484-75500	7550FER10	.50 oz Poly-Coated Speed Strip™



Patented QuikTAB™ feature.



WHEEL BALANCING // ADHESIVE WHEEL WEIGHTS

➔ Zinc and Steel Adhesive Wheel Weights

STEEL

**PLOMBCO
STEEL
ROLLS**

**RUBBER
BASE TAPE**



484-42010

**ADHESIVE WHEEL
WEIGHT ROLL STAND**

- All-metal construction
- Accommodates three rolls
- Floor mount
- Easy to assemble

**ALL-METAL
DESIGN**

**EASY TO
ASSEMBLE**

ASCOT NO.	MFG. NO.	TAPE TYPE	DESCRIPTION
PLOMBCO STEEL ROLLS			
484-35320	320Fe	Rubber Base Tape	20 lb. Roll - 1272 Segments (1/4 Oz.)
484-42010	420Fe	Rubber Base Tape	20 lb. Roll - 640 Segments (1/2 Oz.)
484-52001	520Fe	Rubber Base Tape	20 lb. Roll - 320 Segments, (1 Oz.)

ADHESIVE WHEEL WEIGHT ROLLS

- Simply use the amount of weight you need each time you balance
- Convenient pull and rip design
- No cutting and no measuring
- Rolled weights are more efficient and help reduce waste
- Plastic coated
- US white "quick" tape

**STEEL
ZINC**



484-47026

ASCOT NO.	MFG. NO.	DESCRIPTION
ADHESIVE WHEEL WEIGHT ROLLS		
484-47026	145KG	5 kg Steel Adhesive Wheel Weight Roll: 1/4 Oz. Segments (700 Segments per Roll)
484-57026	245KG	5 kg Zinc Adhesive Wheel Weight Roll: 5G Segments (1000 Segments per Roll)



486-31281

ASCOT NO.	MFG. NO.	DESCRIPTION
486-31281	WWR-3	Adhesive Wheel Weight Roll Stand

WHEEL BALANCING // ADHESIVE WHEEL WEIGHTS

➔ Hofmann Power Wheel Weights



Hofmann Power Weights

HOFMANN POWER WEIGHT TYPE 360 ZINC ADHESIVE WHEEL WEIGHT



488-36010



▪ **Replaces RUZ Series** ▪ **Weights are used as series parts for Audi, Daimler, Chrysler and Land Rover** ▪ Manufactured from Zinc (Zn) ▪ Weights of 20 grams and higher feature a single segment ▪ Weights of 35 grams and higher feature two segments ▪ Weights of 50 grams and higher feature three segments ▪ Weights of 65 grams and higher feature four segments ▪ Segments are now connected with two narrow steps, for easier and faster mounting

ASCOT NO.	MFG. NO.	WEIGHT
TYPE 360		
488-36005	H360005	5 Grams
488-36010	H360010	10 Grams
488-36015	H360015	15 Grams
488-36020	H360020	20 Grams
488-36025	H360025	25 Grams
488-36030	H360030	30 Grams
488-36035	H360035	35 Grams
488-36040	H360040	40 Grams
488-36045	H360045	45 Grams
488-36050	H360050	50 Grams
488-36055	H360055	55 Grams
488-36060	H360060	60 Grams
488-36065	H360065	65 Grams
488-36070	H360070	70 Grams
488-36075	H360075	75 Grams

HOFMANN POWER WEIGHT TYPE 361 ZINC ADHESIVE WHEEL WEIGHT



488-36110



▪ **Replaces CUZ Series** ▪ **Weights are used as series parts for VW, Ford and Volvo** ▪ The weight can also be fitted to other brands if there is sufficient clearance area between brake components and the rim ▪ Manufactured from Zinc (Zn) ▪ Weights of 10 grams and higher feature a single segment ▪ Weights of 30 grams and higher feature two segments ▪ Weights of 40 grams and higher feature four segments ▪ Weights of 55 grams and higher feature five segments

ASCOT NO.	MFG. NO.	WEIGHT
TYPE 361		
488-36105	H361005	5 Grams
488-36110	H361010	10 Grams
488-36115	H361015	15 Grams
488-36120	H361020	20 Grams
488-36125	H361025	25 Grams
488-36130	H361030	30 Grams
488-36135	H361035	35 Grams
488-36140	H361040	40 Grams
488-36145	H361045	45 Grams
488-36150	H361050	50 Grams
488-36155	H361055	55 Grams
488-36160	H361060	60 Grams

HOFMANN POWER WEIGHT TYPE 380 ZINC ADHESIVE WHEEL WEIGHT



▪ **Replaces CC Series** ▪ This weight is made of a premium zinc alloy in a special production process ▪ The strip is easily malleable and thus easily adjustable to the rim radius ▪ The segments can be separated without a tool ▪ Features a resilient, colored powder coating for permanent corrosion protection and high style ▪ 60 gram adhesive weight, made up of 12 x 5 gram segments ▪ Available in 9 different colors



488-38001



488-38002



488-38003

ASCOT NO.	MFG. NO.	COLOR
TYPE 380		
488-38001	H380	Silver
488-38002	H380BK	Black
488-38003	H380CH	Chrome





Wheel Weight Displays and Kits

EMPTY DISPLAY FOR PROFESSIONAL WHEEL WEIGHT KIT

▪ EMPTY RACK ONLY



486-00880

ASCOT NO.	MFG. NO.	DESCRIPTION
486-00880	Kit 80	Empty Display for Professional Wheel Weight Kit

EMPTY DISPLAY FOR PROFESSIONAL STEEL WHEEL WEIGHT KIT

▪ EMPTY RACK ONLY



486-00881

ASCOT NO.	MFG. NO.	DESCRIPTION
486-00881	Kit 80-FE	Empty Display for Professional Steel Wheel Weight Kit

EMPTY DISPLAY FOR BASIC WHEEL WEIGHT KIT

▪ EMPTY RACK ONLY



486-00440

ASCOT NO.	MFG. NO.	DESCRIPTION
486-00440	Kit 40	Empty Display for Basic Wheel Weight Kit

Ask us for more information regarding **WHEEL WEIGHT KITS & DISPLAYS.**

WHEEL BALANCING // WHEEL WEIGHT DISPLAYS & KITS

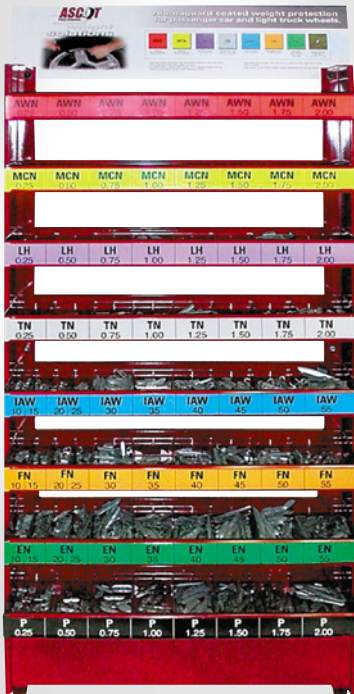
➔ Wheel Weight Kit, Rack, Cart, Shelving System

Wheel Weight Displays and Kits (cont.)



BASIC WHEEL WEIGHT KIT

- All metal floor rack includes dividers for increased flexibility while accommodating a minimum of 64 weight locations
- Metal design simplifies rack assembly
- Header card displays product description and application information for quick reference
- Color coded channel cards for easy inventory and selecting the correct weights
- Each rack contains printed channel cards for common weight styles
- Additional cards provided for flexibility in displaying other weights
- Empty display is also available



486-21280

ASCOT NO.	MFG. NO.	DESCRIPTION
486-21280	5201205	Metal Weight Storage Rack Only. INCLUDES: Header Card, Channel Cards, Planogram And Rim Gauges
486-21285	201275	All Vehicle Assortment. INCLUDES: Metal Wheel Weight Storage Rack, Header Card, Channel Cards, Planogram, Rim Gauges, Wall Chart, Tape-A-Weight Scraper And Premium Wheel Weights. WEIGHT ASSORTMENT INCLUDES: 25 Pieces Each Of The AWN, MCN, TN In .25-2.00 Ounce Sizes, 25 Pieces Of The IAW, FN, EN In the 10-55 Gram Sizes And 50 Pieces Of The Pin .25-2.00 Ounce Sizes
486-21205	5201205	Empty Wheel Weight Display

METAL WHEEL WEIGHT RACK

- All-metal construction
- 8 shelves
- Includes dividers
- 64 weight locations
- Square tube to support the rack



486-31280

ASCOT NO.	MFG. NO.	DESCRIPTION
486-31280	MFR	Metal Wheel Weight Rack

WC-8 WHEEL WEIGHT CART

- Quickly and safely transport wheel weight assortment to the balancer
- Saves time, money and back injuries
- Six sturdy shelves easily support 1800 lb. of wheel weights
- Each shelf holds five 8" square wheel weight boxes
- Taller two center casters create a pivot point for easy turning & movement in tight, sharp areas
- **DIMENSIONS:** 44" x 32" x 33"



486-00008

ASCOT NO.	MFG. NO.	DESCRIPTION
486-00008	WC-8	Wheel Weight Cart

WS-9 WHEEL WEIGHT SHELVING SYSTEM

- Organize, categorize, and store any variety and volume of wheel weights
- Eliminates storage problems
- Shelving system holds a total of 2400 lb.
- Each shelf holds ten 8" x 8" x 8" wheel weight boxes
- Easy assembly and connects with additional units when needed
- **DIMENSIONS:** 73" x 45" x 14"



486-00009

ASCOT NO.	MFG. NO.	DESCRIPTION
486-00009	WS-9	Wheel Weight Shelving System

WHEEL BALANCING // WHEEL WEIGHT DISPLAYS & KITS



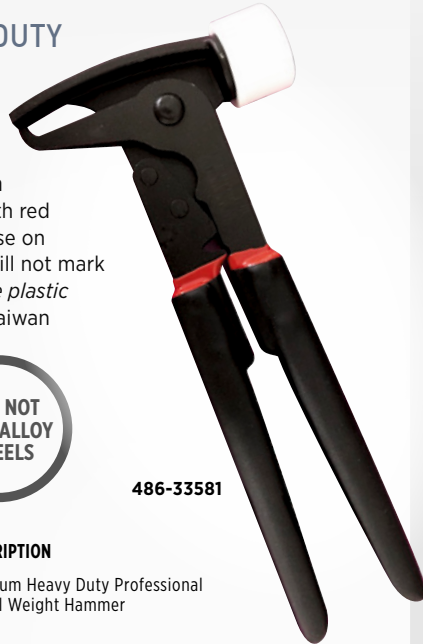


➔ Wheel Weight Hammers

Wheel Weight Tools

PREMIUM HEAVY DUTY PROFESSIONAL WHEEL WEIGHT HAMMER

- **Heavy duty construction**
- Black coated handles with red highlight
- Designed for use on coated wheel weights
- Will not mark alloy wheels
- Replaceable plastic head available
- Made in Taiwan

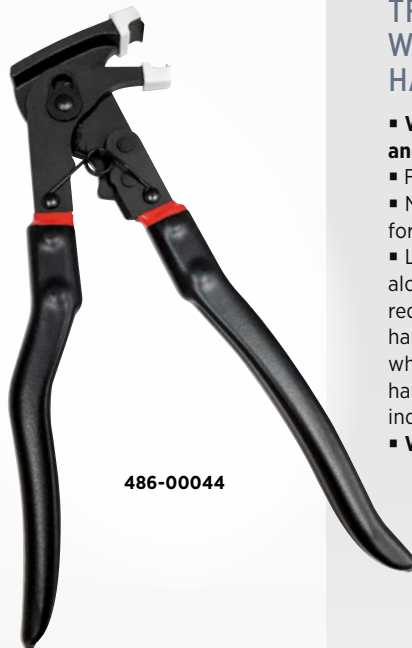


486-33581

ASCOT NO.	MFG. NO.	DESCRIPTION
486-33581	3358-B	Premium Heavy Duty Professional Wheel Weight Hammer

HEAVY DUTY ADHESIVE WHEEL WEIGHT REMOVAL TOOL

- **Light weight and easy to use**
- Easy and quick to remove stick-on wheel weights without damaging rims
- The plastic cover of the jaws can protect the alloy rims from damaging or scratching
- Adjustable jaws for different types and sizes of wheel weights
- Replacement plastic tips available separately



486-00044

ASCOT NO.	MFG. NO.	DESCRIPTION
486-00044	P4	Heavy Duty Adhesive Wheel Weight Removal Tool
486-00144	P4R	Replacement Tips for P4 (2-Pack)

PREMIUM FIBERGLASS WHEEL WEIGHT HAMMER

- **Used to easily install and remove all types of steel and zinc clip-on wheel weights**
- Standard with large replaceable hook for prying
- Fiberglass shaft for added durability
- The hook is made from cold rolled steel
- The striking face has a non-marring, surface protective medium-hard replaceable tip
- Slip-resistant, ergonomic grip reduces arm strain & fatigue
- **MADE IN THE USA**



486-11000



486-11004 486-11005 486-11002

ASCOT NO.	MFG. NO.	DESCRIPTION
486-11000	P110	Premium Fiberglass Wheel Weight Hammer
486-11002	P110-2	Replacement Small Hook for Premium Wheel Weight Hammer
486-11004	P110-4	Replacement Tip for Premium Wheel Weight Hammer
486-11005	8884254	Replacement Large End for P-110 Wheel Weight Hammer

HEAVY DUTY TRUCK WHEEL WEIGHT HAMMER

- **Will handle with ease the removal and attachment of HD truck weights**
- Fiberglass shaft for a lifetime of use
- New chromalloy hooks designed for large wheels and large weights
- Larger 1.75" tip for easier application along with heavier total tool weight require less striking effort
- Longer handle provides added reach on larger wheels...comfortable, durable rubber handle
- Use on all truck wheels
- New industry standard
- 12" total length
- **WEIGHT: 2 lbs.**
- **MADE IN THE USA**



486-11011



486-11006 486-11005

ASCOT NO.	MFG. NO.	DESCRIPTION
486-11011	P110-T	Heavy Duty Truck Wheel Weight Hammer
486-11005	8884254	Replacement Large End for P-110 Wheel Weight Hammer
486-11006	15156	Replacement Tip for Premium Wheel Weight Hammer

WHEEL BALANCING // WHEEL WEIGHT TOOLS



⚠ **WARNING:** For more information go to www.P65Warnings.ca.gov.

ASCOT SUPPLY CORPORATION

BUYER'S GUIDE

➔ Wheel Weight Hammers



Wheel Weight Tools (cont.)

COATED WHEEL WEIGHT HAMMER

- Protects valuable wheels from damage
- Features replaceable plastic head



ASCOT NO.	MFG. NO.	DESCRIPTION
486-00233	P-3B	Soft Head Wheel Weight Hammer
486-00133	P-3H	Replacement Head for P-3B Wheel Weight Hammer

HEAVY DUTY WHEEL WEIGHT HAMMER

- **Heavy duty construction** ▪ Designed for use on coated wheel weights ▪ *Replaceable plastic head available* ▪ Will not mar alloy wheels



ASCOT NO.	MFG. NO.	DESCRIPTION
486-33580	3358	Heavy Duty Wheel Weight Hammer
486-33584	335804	Replacement Head

SPECIALTY WHEEL WEIGHT HAMMERS



ASCOT NO.	MFG. NO.	DESCRIPTION
486-07129	51400	Truck Wheel Weight Hammer
486-51480	51480	Deluxe Wheel Weight Hammer (Made of heat strengthened steel, comfortable vinyl handle grips, nylon durable hammer replaceable tip.)

PASSENGER CAR WHEEL WEIGHT HAMMER

- **The industry standard for passenger car wheel weight tools** ▪ Not for use on alloy or chrome wheels



ASCOT NO.	MFG. NO.	DESCRIPTION
486-00011	P-1	Economy Chrome Wheel Weight Hammer



➔ Wheel Weight Hammers, Wheel Weight Removers, Rim Gauges, Wheel Cleaner

EURO STYLE WHEEL WEIGHT HAMMER

- Heavy Commercial Duty Design ▪ Coated Handles for Comfort ▪ Nickel Plated Vanadium



486-00222

ASCOT NO.	MFG. NO.	DESCRIPTION
486-00222	P-2C	Euro-Style Wheel Weight Hammer

HEAVY DUTY ADHESIVE WHEEL WEIGHT REMOVERS

- For use with stick-on wheel weights: Removes emblems, body side moldings and stick-on wheel weights ▪ Scrape off stickers without scratching paint or glass and gaskets from aluminum parts ▪ One piece composite construction can be hit with a hammer ▪ Knobbed handle to prevent hand from slipping while removing wheel weights ▪ Made of high impact plastic ▪ Resharpener with a file when needed ▪ Equivalent to ESCO 50146



486-7150

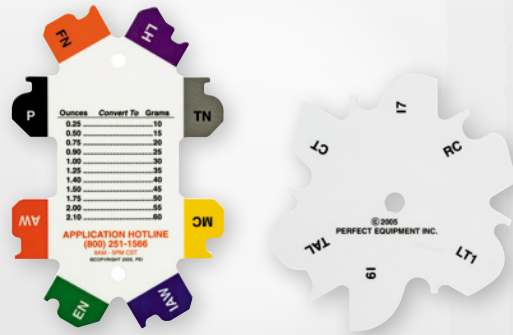
486-7151



ASCOT NO.	MFG. NO.	DESCRIPTION
486-7150	7150	Red Heavy Duty Adhesive Wheel Weight Scraper
486-7151	7151	Black Heavy Duty Adhesive Wheel Weight Scraper

RIM GAUGES

- Convenient and economical gauges that guide you to the correct wheel weight application ▪ Helpful with alloy wheels and thinner high strength steel wheels that have numerous new rim configurations



ASCOT NO.	MFG. NO.	DESCRIPTION
486-75001	RGP1	Rim Gauge For Passenger Cars
486-75002	RG2	Rim Gauge For HD Trucks

WHEEL CLEANER

- Water-Based ▪ Biodegradable ▪ Non-Petroleum ▪ Non-Toxic



486-75017

486-75032

ASCOT NO.	MFG. NO.	DESCRIPTION
486-75017	WC1GRD	Wheel Cleaner – 1 Gallon Bottle
486-75032	WC32FRZRD	Wheel Cleaner – 32 Oz. Spray Bottle

WHEEL BALANCING // WHEEL WEIGHT TOOLS



Counteract Balancing Beads



The only tire and complete wheel assembly balancing technology proven to improve fuel economy in two separate SAE and TMC Type II fuel tests.



-  INCREASE TIRE LIFE
-  IMPROVE FUEL ECONOMY
-  TPMS COMPATIBLE
-  REDUCE VIBRATIONS
-  TROUBLE FREE
-  ENVIRONMENTALLY FRIENDLY
-  REDUCE MAINTENANCE COSTS
-  GUARANTEED

Just open the outside package and throw the inside bag into the tire!



COUNTERACT BALANCING BEADS

▪ **Perfect balance - perfect wear** ▪ Clean, trouble free balancing micro-beads provide continuous self-adjusting balance ▪ No clumping ▪ Just open the outside package and throw the inside bag into the tire ▪ Method allows the use of an air blaster to seat the tire on the rim without contaminating the seating area ▪ Air blaster pressure inside the tire will collapse the bag containing Counteract Balancing Beads or the package will break open and release its contents soon after driving ▪ Available in application sizes from half ton vehicles to heavy trucks ▪ **All packaging is color coded to tire size on application chart**



ASCOT NO.	MFG. NO.	DESCRIPTION	QTY./CASE
451-00013	CBB-IP-LG	Injector Pump for Counteract Balancing Beads	N/A
451-00203	3 Oz. BP	3 Oz. Bag in Bag of Counteract Balancing Beads	96
451-00204	4 Oz. B	4 Oz. Bag in Bag of Counteract Balancing Beads	92
451-00205	5 Oz. B	5 Oz. Bag in Bag of Counteract Balancing Beads	76
451-00206	6 Oz. B	6 Oz. Bag in Bag of Counteract Balancing Beads	64
451-00208	8 Oz. B	8 Oz. Bag in Bag of Counteract Balancing Beads	52
451-00210	10 Oz. B	10 Oz. Bag in Bag of Counteract Balancing Beads	40
451-00212	12 Oz. B	12 Oz. Bag in Bag of Counteract Balancing Beads	36
451-00214	14 Oz. B	14 Oz. Bag in Bag of Counteract Balancing Beads	32
451-00216	16 Oz. B	16 Oz. Bag in Bag of Counteract Balancing Beads	28



➔ ECO Balancing Beads, Counteract ATV/UTV DIY Wheel Balancing Kits

ECO BALANCE
BALANCING BEADS



- Eco friendly complete wheel assembly internal balancing agent
- Increase tire life with even tread wear
- Lower tire operating temperatures
- TPMS Compatible
- Reduce maintenance with easy installation throw-in-bag
- Improve fuel economy by reducing rolling resistance
- Easy to use application chart
- Remain balanced for the life of the tire



COUNTERACT ATV/UTV DIY
WHEEL BALANCING KITS

- Each DIY kit comes with everything you need to balance your tires at home in your garage
- Pre-measured bags of Counteract Balancing Beads for your tire size
- Includes valve cores, valve caps, valve core remover, injection bottle and hose
- KITS H, I, J: 40 kits per case
- KITS K, L, M N: 14 kits per case



451-04042 Kit H

451-04223 Kit I



451-04043 Kit J

451-04044 Kit K



451-04046 Kit L

451-04048 Kit M



451-04410 Kit N



WHEEL BALANCING // TIRE BALANCING COMPOUNDS

ASCOT NO.	MFG. NO.	DESCRIPTION	QTY./CASE
451-01203	3 Oz. BP-EB	3 Oz. Bag in Bag of Eco Balance Passenger Balancing Beads	96
451-01204	4 Oz. B-EB	4 Oz. Bag in Bag of Eco Balance Beads	92
451-01206	6 Oz. B-EB	6 Oz. Bag in Bag of Eco Balance Beads	64
451-01208	8 Oz. B-EB	8 Oz. Bag in Bag of Eco Balance Beads	52
451-01210	10 Oz. B-EB	10 Oz. Bag in Bag of Eco Balance Beads	40
451-01212	12 Oz. B-EB	12 Oz. Bag in Bag of Eco Balance Beads	36
451-01214	14 Oz. B-EB	14 Oz. Bag in Bag of Eco Balance Beads	32
451-01216	16 Oz. B-EB	16 Oz. Bag in Bag of Eco Balance Beads	28

ASCOT NO.	MFG. NO.	DESCRIPTION	QTY./CASE
451-04042	Kit H	4 x 2 Oz. with Kit	40
451-04223	Kit I	2 x 2 Oz./2 x 3 Oz. with Kit	40
451-04043	Kit J	4 x 3 Oz. with Kit	40
451-04044	Kit K	4 x 4 Oz. with Kit	14
451-04046	Kit L	4 x 6 Oz. with Kit	14
451-04048	Kit M	4 x 8 Oz. with Kit	14
451-04410	Kit N	4 x 10 Oz. with Kit	14



➔ Counteract Motorcycle DIY Kits, Dealer Packs



Counteract Balancing Beads (cont.)

COUNTERACT MOTORCYCLE DIY KITS

- Each DIY kit comes with everything you need to balance your tires at home in your garage
- Pre-measured bags of Counteract Balancing Beads for your tire size
- Includes valve cores, valve caps, valve core remover, injection bottle and hose
- **QUANTITY:** 40 kits per case



451-03012 Kit B



451-03013 Kit C



451-03022 Kit D



451-03023 Kit E



451-03223 Kit G



451-03233 Kit F

ASCOT NO.	MFG. NO.	DESCRIPTION	QTY./CASE
451-03012	Kit B	1 Oz. / 2 Oz. with Kit	40
451-03013	Kit C	1 Oz. / 3 Oz. with Kit	40
451-03022	Kit D	2 Oz. / 2 Oz. with Kit	40
451-03023	Kit E	2 Oz. / 3 Oz. with Kit	40
451-03223	Kit G	2 Oz. / 2 Oz. / 3 Oz. with Kit	40
451-03233	Kit F	2 Oz. / 3 Oz. / 3 Oz. with Kit	40

COUNTERACT MOTORCYCLE DEALER PACKS

- Each dealer bag contains 4 pre-measured bags of Counteract Motorcycle Balancing Beads
- Includes 4 valve cores & 4 valve caps
- Typically for shop use but may also be sold at a retail level for DIY customers looking for replacement product



451-05001 MK10Z



451-05002 MK20Z



451-05003 MK30Z



ASCOT NO.	MFG. NO.	DESCRIPTION	QTY./CASE
451-05001	MK10Z	4 x 1 Oz. pre-measured bags	160 Applications (40 Dealer Bags)
451-05002	MK20Z	4 x 2 Oz. pre-measured bags	128 Applications (32 Dealer Bags)
451-05003	MK30Z	4 x 3 Oz. pre-measured bags	96 Applications (24 Dealer Bags)

WHEEL BALANCING // TIRE BALANCING COMPOUNDS



➔ Counteract Motorcycle Dealer Pack Buckets, Ready-Balance Inner Tubes

COUNTERACT MOTORCYCLE DEALER PACK BUCKETS

- Packed with pre-measured bags of Counteract Balancing Beads, 20 valve cores & 20 valve caps
- Each bucket comes with 1 Oz., 2 Oz. or 3 Oz. bags as well as Vortex valve cores and valve caps
- Everything your shop needs for quick and easy installations
- Each bucket also has the Application Chart printed on it so there is no guessing
- **QUANTITY:** 4 buckets per case



451-05011
1 Oz. Bags



451-05012
2 Oz. Bags



451-05013
3 Oz. Bags

ASCOT NO.	MFG. NO.	DESCRIPTION	QTY./ CASE
451-05011	MKSP1	1 Oz. (20 Bags per Bucket)	4
451-05012	MKSP2	2 Oz. (20 Bags per Bucket)	4
451-05013	MKSP3	3 Oz. (20 Bags per Bucket)	4

COUNTERACT READY-BALANCE INNER TUBES FOR MOTORCYCLES

- The first all-in-one tire & complete wheel assembly balancing inner tubes for motorcycles
- Inner tubes come pre-loaded with Counteract Balancing Beads
- **QUANTITY:** 40 tubes per case



451-06008



ASCOT NO.	MFG. NO.	RIM DIA.	METRIC SIZE	TIRE SIZE FITMENT	VALVE	QTY./ CASE
451-06016	MKT-16	10"	2.50/2.75-10	2.50-10, 2.75-10	TR87	40
451-06015	MKT-15		3.00/3.50-10	3.00-10, 3.25-10, 3.50-10, 80/90-10	TR87	40
451-06014	MKT-14	12"	2.50/2.75-12	2.50-12, 2.75-12, 80/100-12, 100/80-12	TR6	40
451-06013	MKT-13		3.00/3.50-12	3.00-12, 3.25-12, 80/100-12, 100/80-12	TR6	40
451-06012	MKT-12	15"	170/80-15	170/80-15	PV-78 (90 degrees)	40
451-06001	MKT-01	16"	5.00/5.10-16	5.00-16, 5.10-16, 130/90-16, 140/80-16, 140/90-16, 150/80-16, MT90-16 MU-90-16, MV85-16	TR6	40
451-06002	MKT-02		5.00/5.10-16 (90)	5.00-16, 130/90-16, 140/80-16, 140/90-16, 150/80-16, MT90/16, MU90/16, MV85-16	TR87 (90 degrees)	40
451-06017	MKT-17		5.00/5.10-16 Side Valve	5.00/16, 5.10-16, 130/90-16, 140/80-16, 140/90-16, 150/80-16, MT90-16, MU90-16, MV85-16	TR6 Side Valve	40
451-06011	MKT-11	17"	2.50/3.00-17	2.50/17, 2.75-17, 3.00/17, 3.10-17, 70/100-17, 80/90-17, 100/80-17	TR6	40
451-06004	MKT-04		4.00/4.50-17	4.00-17, 4.25-17, 4.50-17, 4.60-17, 110/90-17, 110/100-17, 120/80-17, 120/90-17, 130/80-17, 130/70-17	TR6	40
451-06003	MKT-03		6.00/6.50-17	150/160/170-17, 150/70-17, 170/60-17	TR6	40
451-06005	MKT-05	18"	4.00/4.60-18	4.00-18, 4.25-18, 4.50-18, 4.60-18, 4.70-18, 110/90-18, 110/100-18, 120/80-18, 120/90-18, 130/70-18, 130/80-18, MP85-18, MR90-18	TR6	40
451-06006	MKT-06		5.00/5.10-18	5.00-18, 5.10-18, MT90-18, 120/100-18, 130/90-18, 140/80-18, 140/90-18, 140/70-18	TR6	40
451-06010	MKT-10		5.00/5.10-18 Rim Lock		TR6	40
451-06007	MKT-07	19"	3.50/4.00-19	3.50-19, 4.00-19, 4.10-19, 4.25-19, 4.60-19, 100/90-19, 110/80-19, 110/90-19, 120/80-19, MM90-19, MN90-19	TR6	40
451-06008	MKT-08	21"	2.75/3.00-21	2.75-21, 3.00-21, 80/90-21, 80/100-21, 90/80-21, 90/90-21, 100/80-21, MH90-21	TR6	40
451-06009	MKT-09	23"	2.75/3.00-23	2.75/23, 3.00-23, 80/90-23, 80/100-23, 90/80-23, 90/90-23, 100/80-23, MJ90-23, MH90-23	TR6	40

WHEEL BALANCING // TIRE BALANCING COMPOUNDS





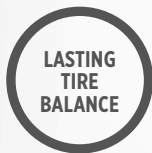
MAGNUM+ Tire Balancing

MAGNUM+ BALANCING COMPOUND

▪ An advanced technology dry tire balancing compound, with superior tire balancing properties ▪ Formulated from specially-processed multiple-density materials ▪ Provides continuous and lasting tire balancing for standard, low-profile and wide-base medium truck tires and heavy duty light truck tires ▪ No more time-consuming and expensive mechanical balancing, perfect self-adjusting balance in all your tires, less vehicle wear and tear, easier maintenance and less driver fatigue



451-00200



ASCOT NO.	MFG. NO.	SAMPLE TIRE SIZE	QTY./CASE
451-00150	LTP150	LT215/75/R15	36
451-00200	LTP200	LT235/85R16	24
451-00250	MTP250	33x12.50R15	24
451-00300	MTP300	245/75R22.5	18
451-00400	MTP400	11R22.5/11R24.5	12
451-00500	MTP500	12R24.5	12
451-06000	DPP600	365/80R22.5	6
451-07000	DPP700	425/65R22.5	6

MAGNUM+ FLEET TUBS

▪ Each tub is labeled and packaged for a specific premeasured insert bag ▪ Bulk discounts apply to each tub size ▪ Tubs are durable and reusable with a resealable lid ▪ Complete with a full color label, tubs look great in retail settings and on delivery trucks ▪ Eliminates wasted extra packaging and tubs are recyclable



MAGNUM+ microbeads distribute themselves evenly inside the tire due to the centrifugal force. A special antistatic coating preserves the mobility of the microbeads for a long time.



451-72305

ASCOT NO.	RANGE	NOM. WT.	DESCRIPTION	QTY./CASE
451-10003	LFP100 INSERT™	3 Oz.	MAGNUM+ Fleet Tub - Contains 24 LTP100	24
451-15405	LFP150 INSERT™	4-1/2 Oz.	MAGNUM+ Fleet Tub - Contains 24 LTP150	24
451-20605	LFP200 INSERT™	6-1/2 Oz.	MAGNUM+ Fleet Tub - Contains 24 LTP200	24
451-25805	MFP250 INSERT™	8-1/2 Oz.	MAGNUM+ Fleet Tub - Contains 22 MTP250	22
451-31005	MFP300 INSERT™	10-1/2 Oz.	MAGNUM+ Fleet Tub - Contains 18 MTP300	18
451-40013	MFP400 INSERT™	13 Oz.	MAGNUM+ Fleet Tub - Contains 14 MTP400	14
451-60021	DFP600 INSERT™	21 Oz.	MAGNUM+ Fleet Tub - Contains 6 DPP600	6
451-72305	DFP700 INSERT™	23-1/2 Oz.	MAGNUM+ Fleet Tub - Contains 6 DPP700	6



➔ EQUAL FLEXX™

EQUAL FLEXX™ Tire Balancing

IMI EQUAL FLEXX is an adaptive, internal wheel-end balancing solution that reduces fuel and tire costs by reducing vibration from the wheel end. Developed in partnership with the foremost experts in vibration analysis and testing, its soft, dry particles are engineered to continuously balance tires, creating a smoother ride and more even tire wear for the life of the tire. FLEXX will never damage the tire casing, wheel, or TPMS units. It does not void tire manufacturer warranties.



INSTALLATION INSTRUCTIONS

BEFORE INSTALLING FLEXX, READ THE QUANTITY CHART.

1. Simply drop the FLEXX bag into the tire before mounting. Do not tear or open bag.
2. Mount the tire on the wheel. Inflate and adjust the air pressure of the tire.
3. Install filtered valve core and identification sleeve.

Avoid over lubricating tire bead or installing FLEXX in tires filled with sealant. Contents are non-toxic, environmentally safe, and non-flammable.

TPMS
COMPATIBLE

TMC
COMPLIANT

ASCOT NO.	MFG. NO.	DESCRIPTION
451-32016	EQFXWC32	EQUAL FLEXX Drop In Bag (32) W pkgs. (16 Oz.)
451-40004	EQFXEC40	EQUAL FLEXX Drop In Bag (40) E pkgs. (4 Oz.)
451-40006	EQFXDC40	EQUAL FLEXX Drop In Bag (40) D pkgs. (6 Oz.)
451-40008	EQFXCC40	EQUAL FLEXX Drop In Bag (40) C pkgs. (8 Oz.)
451-40010	EQFXBC40	EQUAL FLEXX Drop In Bag (40) B pkgs. (10 Oz.)
451-40012	EQFXAC40	EQUAL FLEXX Drop In Bag (40) A pkgs. (12 Oz.)
451-40016	EQFXFC40	EQUAL FLEXX Drop In Bag (40) F pkgs. (3 Oz.)



GO BEYOND BALANCE



FUEL COST



TIRE WEAR



PRODUCTIVITY



SMOOTHER
RIDE

FLEXX™ is the most scientifically refined internal wheel-end balancer available. It installs in seconds, and keeps fleets running smoothly year after year.

2X MORE VIBRATION
ABSORPTION POWER

UP TO 15% BETTER PERFORMANCE

LOWEST ROLLING RESISTANCE,
MORE EVEN TIRE WEAR AND
THE SMOOTHEST RIDE

EASIEST TO USE



FLEXX
MORE MILES. LESS FUEL

WHEEL BALANCING // TIRE BALANCING COMPOUNDS



EQUAL FLEXX™ Tire Balancing (cont.)

COMMERCIAL TIRE APPLICATION CHART

▪ Shown below is the Commercial Truck Tire Application Chart. The full Application Quantity Chart, which includes Commercial Light Truck Tires and Light Truck Mudders, can be viewed at www.imiproducts.com/flexx-quantity-chart.

TIRE SIZE		WHEEL POSITION	
		SINGLE	DUAL
TRUCK TIRES			
7.50	R18	E-4 Oz.	D-6 Oz.
8.00	R19.5	D-6 Oz.	C-8 Oz.
9.00	R19.5	D-6 Oz.	C-8 Oz.
18.00	R19.5	W-16 Oz.	—
225/70	R19.5	D-6 Oz.	C-8 Oz.
245/70	R19.5	D-6 Oz.	C-8 Oz.
265/70	R19.5	D-6 Oz.	C-8 Oz.
275/70	R19.5	C-8 Oz.	B-10 Oz.
285/70	R19.5	C-8 Oz.	B-10 Oz.
295/70	R19.5	C-8 Oz.	B-10 Oz.
305/70	R19.5	B-10 Oz.	A-12 Oz.
280/75	R19.5	C-8 Oz.	B-10 Oz.
445/65	R19.5	W-16 Oz.	—
525/65	R20.5	B+C+C=26 Oz.	—
615/65	R20.5	A+A+B=34 Oz.	—
7.50	R20	C-8 Oz.	B-10 Oz.
8.25	R20	C-8 Oz.	B-10 Oz.
9.00	R20	B-10 Oz.	A-12 Oz.
10.0	R20	B-10 Oz.	A-12 Oz.
11.00	R20	A-12 Oz.	B+E=14 Oz.
12.00	R20	A-12 Oz.	B+E=14 Oz.
12.50	R20	A-12 Oz.	B+E=14 Oz.
13/80	R20	A-12 Oz.	B+E=14 Oz.
14/80	R20	B+E=14 Oz.	W-16 Oz.
14.00	R20	W-16 Oz.	—
16.00	R20	B+B=20 Oz.	—
10.00	R22	B-10 Oz.	A-12 Oz.
11.00	R22	A-12 Oz.	B+E=14 Oz.
9.00	R22.5	C-8 Oz.	B-10 Oz.
10.00	R22.5	B-10 Oz.	A-12 Oz.
11.00	R22.5	B-10 Oz.	A-12 Oz.
12.00	R22.5	A-12 Oz.	B+E=14 Oz.
275/50	R22.5	B-10 Oz.	A-12 Oz.
235/70	R22.5	D-6 Oz.	C-8 Oz.
255/70	R22.5	C-8 Oz.	B-10 Oz.
11/70	R22.5	B-10 Oz.	A-12 Oz.
265/70	R22.5	C-8 Oz.	B-10 Oz.
295/60	R22.5	B-10 Oz.	A-12 Oz.
275/70	R22.5	B-10 Oz.	A-12 Oz.

TIRE SIZE		WHEEL POSITION	
		SINGLE	DUAL
TRUCK TIRES			
305/70	R22.5	B-10 Oz.	A-12 Oz.
365/70	R22.5	B+E=14 Oz.	—
315/70	R22.5	B-10 Oz.	A-12 Oz.
245/75	R22.5	C-8 Oz.	B-10 Oz.
265/75	R22.5	C-8 Oz.	B-10 Oz.
285/75	R22.5	B-10 Oz.	A-12 Oz.
295/75	R22.5	B-10 Oz.	A-12 Oz.
315/75	R22.5	A-12 Oz.	B+E=14 Oz.
345/75	R22.5	A-12 Oz.	—
350/75	R22.5	B+E=14 Oz.	—
235/80	R22.5	D-6 Oz.	C-8 Oz.
255/80	R22.5	C-8 Oz.	B-10 Oz.
275/80	R22.5	B-10 Oz.	A-12 Oz.
295/80	R22.5	A-12 Oz.	B+E=14 Oz.
305/85	R22.5	A-12 Oz.	B+E=14 Oz.
315/80	R22.5	A-12 Oz.	B+E=14 Oz.
365/80	R22.5	B+E=14 Oz.	—
445/50	R22.5	W-16 Oz.	—
455/50	R22.5	W-16 Oz.	—
385/65	R22.5	A-12 Oz. hwy	W-16 Oz. flotation
425/65	R22.5	W-16 Oz.	—
435/45	R22.5	B+E=14 Oz.	—
445/55	R22.5	W-16 Oz.	—
445/65	R22.5	W-16 Oz.	—
495/45	R22.5	W-16 Oz.	—
15.00	R22.5	A-12 Oz. hwy	W-16 Oz. flotation
16.50	R22.5	W-16 Oz.	—
18.00	R22.5	W-16 Oz.	—
11.00	24	A-12 Oz.	B+E=14 Oz.
12.00	24	B+E=14 Oz.	—
14.00	24	W-16 Oz.	—
285/75	R24.5	B-10 Oz.	A-12 Oz.
305/75	R24.5	A-12 Oz.	B+E=14 Oz.
315/75	R24.5	A-12 Oz.	B+E=14 Oz.
275/80	R24.5	B-10 Oz.	A-12 Oz.
295/80	R24.5	B-10 Oz.	A-12 Oz.
11.00	R24.5	B-10 Oz.	A-12 Oz.
12.00	R24.5	A-12 Oz.	B+E=14 Oz.

WHEEL BALANCING // TIRE BALANCING COMPOUNDS



FLEXX
MORE MILES. LESS FUEL



ACCEPT NO SUBSTITUTES.



American Made.



FLEXX is the only internal ADAPTIVE wheel-end balancer that can dynamically balance while responding to load, speed, and road forces by distributing weight at the footprint immediately ...for the life of the tire.



FLEXX
MORE MILES. LESS FUEL

ADHESIVE WHEEL BALANCE WEIGHTS

GOOD

PERFECT STEEL[®] 1/4 OZ.

- Brand Name: Perfect Equipment
- 0.25 oz. Segment Steel Adhesive Weight
- 0.1875" height (low profile), 0.75" width
- 3-year Powder Coating (grey or black)
- Standard White Foam Tape
- 48 strips per box



PN: 200576FE (11lb. Roll = 200576FER)



PN: 200576FEBLK

PERFECT STEEL[®] 1/2 OZ.

- Brand Name: Perfect Equipment
- 0.50 oz. Segment Steel Adhesive Weight
- 0.32" height, 0.75" width
- 3-year Powder Coating (grey or black)
- Standard White Foam Tape
- 28 strips per box



PN: 300336FE



PN: 300336FEBLK

ROLL STANDS

- Single Roll Stand
PN: QS2000
- Double Roll Stand
PN: QS3000



BETTER

PERFECT QUIKSTIK[®] 1/4 OZ.

- Brand Name: Perfect Equipment
- 0.25 oz. Segment Steel Adhesive Weight
- 0.1875" height (low profile), 0.75" width
- 5-year Nano Coating
- Standard White Foam Tape
- 48 strips per box



PN: 200624ST

PERFECT QUIKSTIK[®] 1/2 OZ.

- Brand Name: Perfect Equipment
- 0.50 oz. Segment Steel Adhesive Weight
- 0.3125" height, 1" width
- 5-year Nano Coating
- Standard White Foam Tape
- 30 strips per box



PN: 300360ST

PERFECT QUIKSTIK[®] ROLLS

- Brand Name: Perfect Equipment
- Same as 0.25 oz. option as above
- 1,280 segments, 20lb. Box
PN: 200624STR
- Same 0.50 oz. option as above
- 1,500 segments, 16.5lb. Box
PN: 300360STR



BEST

HOFMANN OE STEEL 1/4 OZ.

- Brand Name: Hofmann Power Weight
- 0.25 oz. Segment Steel Adhesive Weight
- 0.225" height, 0.75" width
- 10-year OEM Powder Coating
- Standard White Foam Tape
- 25 strips per box

No.1 OEM WEIGHT
IN THE WORLD



PN: SST300N

LEAD

LEAD QUIKSTIK[®] 1/4 OZ.

- Brand Name: Perfect Equipment
- 0.25 oz. Segment Uncoated Lead Adhesive Weight, 30 strips per box
- 0.2188" height, 0.50" width
- Standard White Foam Tape



PN: 100360

LEAD QUIKSTIK[®] 1/2 OZ.

- Brand Name: Perfect Equipment
- 0.50 oz. Segment Uncoated Lead Adhesive Weight, 30 strips per box
- 0.2188" height, 0.75" width
- Standard White Foam Tape



PN: 300360

LEAD QUIKSTIK[®] CL6

- Brand Name: Perfect Equipment
- 1 oz. Segment Uncoated Lead Adhesive Weight, 30 strips per box
- 0.2188" height, 0.75" width
- Standard White Foam Tape



PN: CL6

HOFMANN POWER WEIGHT and PERFECT EQUIPMENT
are brands of